

# **JURONG SECONDARY SCHOOL**

**SECONDARY ONE  
MEET THE PARENTS & CCA DISPLAY DAY  
2025**

## **Programme Flow for Parents in the Hall – 8.15am to 9.30am**

**Welcome Address by Principal, Ms Yeo Siok Ee**

**Talk by Parent Support Group (PSG) - PSG Chairperson, Mdm Liaw Mui Chee**

**Talk by Sec 1 Level Head - YH, Ms Hannah Wen**

**Briefing on National Digital Literacy Programme - HOD/ EdTech, Mr Ooi Wei Yong**

**Briefing on Student Management Matters – HOD/SM, Mr Philip Wan**

**Overview of CCA Programme – Covering HOD/PE & CCA, Ms Ong Wei Chen**

## Programme Flow for Students 9.30am to 11.30am

**Form Teacher Time**

**Venue : Classrooms**

*Students will rejoin parents at the form class venue at 10.15am*



**Free and easy viewing of  
CCA Display booths  
(Optional)**

**10.15 am – 11.30 am**

**Sports Excellence  
Programme Briefing (Hall)**

*For students and parents of students who  
have been pre-selected for volleyball,  
basketball, cross-country and badminton*

**10.30 am – 10.50 am**

# Address by Principal Ms Yeo Siok Ee



# Overview

- Our Staff
- Secondary Education and our School's Focus
- Our Commitment including Full SBB
- Student Development
- Your Support and Partnership

# Our Staff

# Our Vice Principals



***Mdm Julia Ler  
Vice-Principal***



***Mr Lu Yeow Chor  
Vice-Principal (Admin)***

# Our Key Personnel (Teaching & Learning)



Ms Shynn Lim  
*HOD English Language*



Mr Darius Sim  
*Covering SH  
English Language  
/ Literature*



Mr Traven Loh  
*SH Science*



Mdm Zoey Oh  
*SH Chinese Language*



Ms Ng Ching Ing  
*HOD Mother Tongue  
Languages*



# Our Key Personnel (Teaching & Learning)



Mdm Zheng Jieyun  
*Covering HOD  
Mathematics*



Mdm Amy Wu  
*Covering SH Mathematics*



Mrs Juliana Ng  
*HOD Applied Studies*



Mdm Lee Hui Cheng  
*SH Humanities*



Mr Wu Zonglun  
*HOD Humanities*

# Our Key Personnel (Teaching & Learning)



Mr Eric Tan  
*School Staff Developer*



Mr Ooi Wei Yong  
*HOD Education Technology*



Mr Lam Chee Leong  
*SH ICT*



Mr Sim Guo Chen  
*SH Assessment*

# Our Key Personnel (Student Development Team)



Ms Ong Wei Chen  
*Covering HOD PE & CCA*



Mdm Wang Cuifeng  
*Covering SH PE & CCA*



Mr Philip Wan Wei Meng  
*HOD Student Management*



Ms Zawani Mion  
*SH Student Management*



Mr Nur Izhar Bin Sa'at  
*Covering HOD CCE*

# Our Key Personnel (Student Development Team]



Ms Hannah Wen  
*Year Head, Lower Secondary*



Ms Norliyana Matin  
*Asst Year Head*

## **CCE SPECIALISTS**



Mr Ler Jun Yi



Ms Roxanne Choy



Mr Aaron Tang  
*Year Head, Upper Secondary*



Ms Chua Syin Thian  
*Asst Year Head*



Mr Ng Teck Koon



Ms Clarice Teoh



# Our Lead & Senior Teachers



Ms Shuryani  
*Covering ST CCE*



Mr Richard Koh  
*LT English Language*



Mdm Teo Kah Ping  
*LT Educational Support*



Ms Siti Daliah  
*ST Malay Language*



Ms Julianah Johar  
*ST Chemistry*

# Our Student Support Team



Ms Siti Marinah Bte Mohd Ali  
*Senior School Counsellor*



Mr Lee Hao Yong  
*Senior SEN Officer*



Ms Sivasubramaniam Shakthi  
*School Counsellor*

# Our Admin Support



Mdm Teena Chua  
*Admin Manager*



Mdm Koh Kiat Peng  
*Admin Manager*



Mr Peter Kwek  
*Operations Manager*



Mdm Julaiha  
*Counter Staff*



Mdm Yvonne Lim  
*Counter Staff*



## 2025 S1 Intake



Posting Group	AL Range	% students eligible for at least 1 MDL subject
<b>G3</b>	12 – 15	-
<b>G2</b>	21 – 23	97%
<b>G1</b>	25 – 27	100%



# OUR HERITAGE

- First Secondary School in Jurong
- By the Community, For the Community



# OUR FOCUS

## Every Child a Success Story





LOYALTY

忠



The Jurong Secondary Student identifies with and is committed to his class, school and country. He takes pride in being a good ambassador and carries out his responsibilities faithfully.

Our School

INDUSTRY

勤



The Jurong Secondary Student, in his pursuit of excellence, gives his best, demonstrating discipline and resilience in the face of challenges. An industrious individual, he perseveres to improve himself.

Values

SINCERITY

诚



The Jurong Secondary Student is earnest and respectful in his interactions with others. He is an upright and just individual who carries himself with integrity.

LOVE

爱



The Jurong Secondary Student is passionate in what he does. He is ready to champion a cause for the well-being of others, demonstrating compassion and concern.

# VISION

## Champions of Mind, Leaders with Heart

JSS students possess mental grit, are cognitively flexible and confident, and persevere in the face of adversity.

JSS students are concerned citizens who take initiative and show genuine interest to actively contribute to the community, possessing the moral courage to be an advocate for society.





# CHAMPIONS OF MIND, LEADERS WITH HEART: KINISHAA D/O NELAMEGAN, 4-2 (2024)



Vasantham TV, 16 Dec 2024

# MISSION

## Journeying Together

*Working in partnership with **diverse stakeholders***

## Shaping Values

*to help our students live out our **school values***

## Striving Towards Excellence

*and pursue **excellence** in all that they do.*

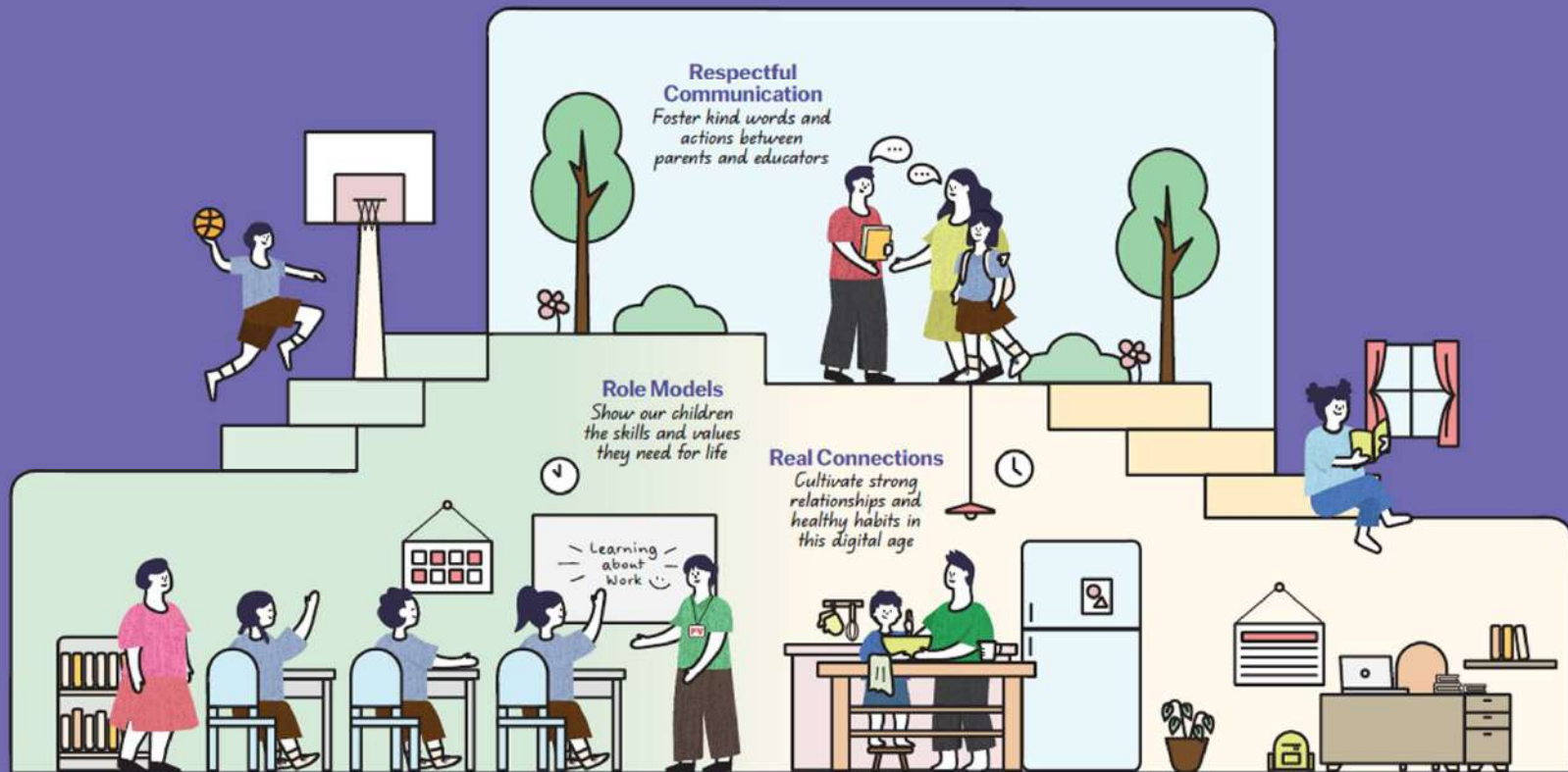
We journey together with our students with the support of **our staff, their parents, SAC, alumni, industry partners and the Taman Jurong community and beyond.**

We shape our students' values and help them build **Loyalty, Industry, Sincerity and Love.**

We support our students in their pursuit of excellence in their **studies, CCA and interests.**

Guidelines for School-Home Partnership

# Raising a Happy, Confident, and Kind Generation Together



A joint effort in 2024 by  
the Ministry of Education and COMPASS

# CREATING DIVERSE OPPORTUNITIES - Student Choice



## Clubs and Societies

Media & Visual Arts  
Science Explorers



## Sports

Badminton (Boys)  
Basketball  
Cross Country  
Dragon Boat  
Volleyball (Girls)



## Performing Arts

Choir  
Concert Band  
Contemporary Dance  
Guzheng Ensemble  
English Drama



## Uniformed Groups

Girl Guides  
National Cadet Corps  
(Land/Boys)  
National Police Cadet Corps  
Red Cross Youth  
Scouts (Boys)





# CREATING DIVERSE OPPORTUNITIES –

## Student Agency

### Distinctive Programmes



**Applied Learning Programme (ALP)**

Design for Smart & Sustainable Urban Living



**Lifelong Learning Programme (LLP)**

Sporty at Heart, Sporting in Mind



**inSPire Award**

Aesthetics and Culture  
Media and Infotech  
Science and Technology



**Values in Action**

Project  
COMpassion

# DEVELOPING ASPIRATIONAL READINESS - CREATORS, CONNECTORS, CONTRIBUTORS

## ALP in Design for Smart & Sustainable Urban Living "Hands on, Minds on Curriculum"

- Interdisciplinary approach: sustainable urban living, design thinking & coding skills
- Leverages the Imaginarium and technological tools
- Annual MakerFaire and Green Carnival to showcase Sec 1 and 2 student prototypes
- Local and Overseas Learning Journeys



# CREATING DIVERSE OPPORTUNITIES -

## Student Agency

### Strong Student Leadership Structure

- Class Committees
- CCA Leaders
- Peer Support Leaders
- Student Councillors





# CREATING DIVERSE OPPORTUNITIES – Student Agency

1 LEVEL PROGRAMMES

2 CCA PROGRAMMES

3 SCHOOL EVENTS



# DEVELOPING ASPIRATIONAL READINESS - CULTURE OF EXCELLENCE

## Skills, Talent And Research Programme (STAR)

- 3 - year programme to nurture talents
- Offered to students interested in delving deeper into the disciplinary domains
- Diverse learning environments, including Overseas Learning Journeys
- Supported by the School Advisory Committee



# DEVELOPING ASPIRATIONAL READINESS – CULTURE OF EXCELLENCE

## Learning For Life Programme

- Sports Scholarship - Offered to talented basketball, volleyball, badminton and cross-country sportsmen and sportswomen
- Funds can be used for
  - honing skillsets through courses
  - enhancing Sports Science knowledge through seminars
  - improving sporting performance through additional training resources and gear





# A SCHOOL OF GROWTH

OUR VISION



OUR MISSION



OUR VALUES



Champions of Mind,  
Leaders with Heart

Journeying Together  
Shaping Values  
Striving Towards Excellence

Loyalty Industry  
Sincerity Love

## STUDENT OUTCOMES

*Every Student A Success Story*



### Adaptive Thinker

- **Curious**, open to diverse perspectives and contexts
- **Cognitively flexible**, responds nimbly

### Confident Person

- Keen **awareness** of one's own strengths and potential
- **Courageous**, voicing and exchanging ideas spontaneously, **responsibly** and **respectfully**

### Persevering Learner

- **Determined**, takes calculated risks and persists through failure
- **Reflective**, has the will to act and to strive for excellence

### Concerned Citizen

- **Empathetic and caring**, committed to the betterment of our community
- **Rooted** to Singapore, when engaging with global and social issues

## THE 4 LEVEL OUTCOMES



# A SCHOOL OF GROWTH

OUR VISION



OUR MISSION



OUR VALUES



Champions of Mind,  
Leaders with Heart

Journeying Together  
Shaping Values  
Striving Towards Excellence

Loyalty Industry  
Sincerity Love



## STUDENT OUTCOMES

*Every Student A Success Story*



### Adaptive Thinker

- **Curious**, open to diverse perspectives and contexts
- **Cognitively flexible**, responds nimbly

### THE 4 LEVEL OUTCOMES





# Opportunities to Grow as Adaptive Thinker

*Curious, open to diverse perspectives and contexts*

*Cognitively flexible, responds nimbly*

- New classmates, CCA mates, teachers, subjects
- Challenges and new learning experiences, e.g. SYF, NSG
- Updated school policies, e.g. mobile phones, iPad, communication
- Helping one another, learning from one another

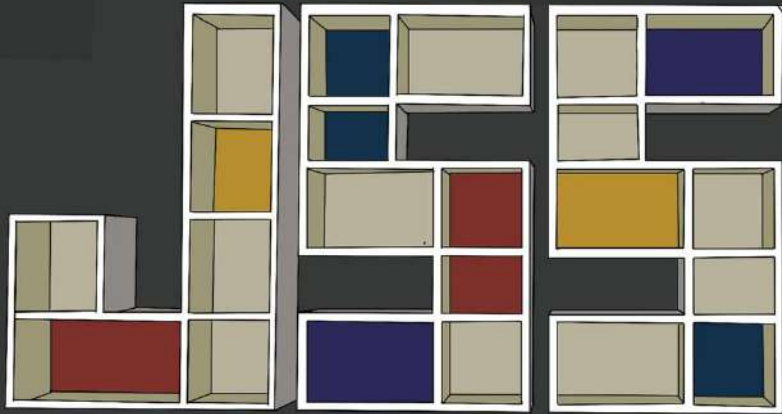


Jurong Secondary School

忠·勤·誠·愛

Loyalty · Industry · Sincerity · Love

**THANK YOU**



**Every  
Child a  
Success  
Story**



# Mdm Liaw Mui Chee Chairperson - PSG



Jurong Secondary School

忠·勤·誠·愛

Loyalty . Industry . Sincerity . Love

# Parent Support Group

---

## Vision

Collaborative partnership with the School to nurture our children to be "Champions of Mind, Leaders with Heart."

## Mission

Support school programmes by tapping on parents' expertise and resources so that our children can achieve their fullest potential.

## Objectives

- Promote interaction among members of the Parent Support Group including the sharing of experience by parents
- Facilitate communication between parents and school
- Provide support for school programmes



# Parent Support Group

## OUR FOCUS AREAS





# Parent Support Group

## Our Programs 2024

### Appreciation

- Teachers' Day
- Motivation Cards for Students

### Awareness

- Parenting Talks with THK
- Parents Chat Groups
- Facebook

### Bonding

- CNY (SCH)
  - Racial Harmony Day (SCH/PSG)
  - National Day (SCH)
- PSG Networking Day

### Development

- Trainer
- Handicrafts

### Sustainability

- Recruitment & Outreach (PSG)
- Succession
- Advisor
- PSG Alumni



# JSS PSG Executive Committee

	Name of Parent
Chairperson	Mdm Liaw Mui Chee
Co-Chairperson	Mdm Diana Regehr
Co-Chairperson	Mr Solomon Anthony
Secretary	Mdm Sheena Goh
Assistant Secretary	Mdm Ramani Saravanan
Assistant Secretary	Mdm Kathy Kong
Advisor	Mdm Yusnizan Bte Mohd Talib
EXCO Member	Mr Kenneth Kee
EXCO Member	Mdm Saraswathi
EXCO Member	Mdm Jade Du
EXCO Member	Mdm Sherlin Tan
EXCO Member	Mdm Jennyfer Aw
EXCO Member	Mdm Devaki Suppramaniam

## JURONG SECONDARY SCHOOL PARENTS SUPPORT GROUP COMMITTEE



# Parent Support Group

---

Join us!



<https://go.gov.sg/psg-jss>



# Partnering THK Parenting Support Provider



太和觀 THK

## THYE HUA KWAN MORAL CHARITIES

*Vision: ONE THK, Empowering the Community*

*Mission: To help anyone who needs help, with full respect to their race, colour, creed, language, culture and religion – to serve mankind.*

# Positive Parenting Programme

Do you get remarks like “Later!” or “I’m tired!” from your teenager? Despite the resistance, how can parents find ways to instil motivation, drive and discipline in our teens?



THYE HUA KWAN  
MORAL CHARITIES



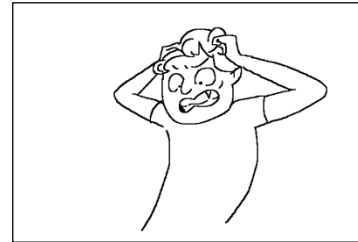
# Is your teenager showing any of these behaviours?



Less conversational



More attitude



More anger



More anxious



More time on devices



More restless



More tired



# Dear Parents,

What do you wish for your teenager?

## Be More Responsible

- Keep promises

## Be More Competent

- Ownership of goals
- Ability to be a good problem solver

## Positive Socially Connected

- Confident to manage peer pressure

## Be More Motivated & Resilient

- Face setbacks & disappointment as opportunities to learn and grow





# Positive Parenting Programme

This seminar will equip you with skills to inspire a change in your child's emotions and behaviours.

**Seminar Details:**

**Part 1:**

**Date: 18 January 2025 (Saturday)**

**Time: 10am to 12.30pm**

**Part 2:**

**Date: 24 January 2025 (Friday)**

**Time: 7pm to 9pm**

**The seminar will be conducted online via Zoom and is fully sponsored!**



**THYE HUA KWAN  
MORAL CHARITIES**



# Ms Hannah Wen Lower Sec YH



Jurong Secondary School

忠·勤·誠·愛

Loyalty · Industry · Sincerity · Love

# Class 1-1



**Form Teacher**  
Ms Nurhuda Bte Pardi  
*Teacher, Applied Studies*



**Class Mentor**  
Mrs Low-Teo Kah Ping  
*LT, Educational Support*



**Jurong Secondary School**

忠·勤·诚·爱

*Loyalty . Industry . Sincerity . Love*

# Class 1-2



**Form Teacher**  
Mdm Lee Wai Yee  
*Teacher, Mother Tongue*



**Form Teacher**  
Mr Karthigesu  
*Teacher, Mathematics*



**Class Mentor**  
Mrs Low-Teo Kah Ping  
*LT, Educational Support*



**Jurong Secondary School**

忠·勤·诚·爱

*Loyalty . Industry . Sincerity . Love*



# Class 1-3



**Form Teacher**  
Mr Muthukumar  
*Teacher, Physical Education*



**Form Teacher**  
Mr Traven Loh  
*SH, Science*



**Class Mentor**  
Ms Hannah Wen  
*Year Head, Lower Secondary*



**Jurong Secondary School**

忠·勤·诚·爱

*Loyalty . Industry . Sincerity . Love*

# Class 1-4



**Form Teacher**  
Mr Ng Chin Woon  
*Teacher, Applied Studies*



**Class Mentor**  
Ms Hannah Wen  
*Year Head, Lower Secondary*



**Jurong Secondary School**

忠·勤·诚·爱

*Loyalty . Industry . Sincerity . Love*

# Class 1-5



**Form Teacher**  
Mdm Chin Hsuen Wei  
*Teacher, Mother Tongue*



**Form Teacher**  
Mr Kenny Hong  
*Teacher, Science*



**Class Mentor**  
Ms Hannah Wen  
*Year Head, Lower Secondary*



**Jurong Secondary School**

忠·勤·诚·爱

*Loyalty . Industry . Sincerity . Love*

# Class 1-6



**Form Teacher**  
Mdm Soo Lee Fong  
*Teacher, Mother Tongue*



**Form Teacher**  
Mr Ler Jun Yi  
*Teacher, Physical Education*



**Class Mentor**  
Mdm Juliana Ng  
*HOD, Applied Studies*



**Jurong Secondary School**

忠·勤·诚·爱

*Loyalty . Industry . Sincerity . Love*



# Class 1-7



**Form Teacher**  
Ms Low Qian Ling  
*Teacher, English Language*



**Form Teacher**  
Mdm Wang Cuifeng  
*Covering SH, PE & CCA*



**Class Mentor**  
Mdm Juliana Ng  
*HOD, Applied Studies*



**Jurong Secondary School**

忠·勤·诚·爱

*Loyalty . Industry . Sincerity . Love*

# Class 1-8



**Form Teacher**  
Ms Bazilah Baderi  
*Teacher, Mother Tongue*



**Form Teacher**  
Mr Sim Guo Chen  
*SH, Assessment*



**Class Mentor**  
Mdm Juliana Ng  
*HOD, Applied Studies*



**Jurong Secondary School**

忠·勤·诚·爱

*Loyalty . Industry . Sincerity . Love*

 <p><i>Reflective Learner</i></p> <p><b>All Aboard</b></p> <p><b>Sec 1</b></p>	 <p><i>Courageous Contributor</i></p> <p><b>Take Flight</b></p> <p><b>Sec 2</b></p>	 <p><i>Resilient Leader</i></p> <p><b>Mission (I'm) Possible</b></p> <p><b>Sec 3</b></p>	 <p><i>Inspirational Role Model</i></p> <p><b>Above &amp; Beyond</b></p> <p><b>Sec 4/5</b></p>
--	---	---	---

# JSS JOURNEY

# Secondary One Level Outcome

## Reflective Learner

Awareness of identity, personal beliefs, strengths and weaknesses

Curious, open-minded, and empathetic

Understands what matters through engaging with contemporary issues; believes in Singapore





# Supporting our Students

## Teacher-Student Relationship

- Getting to know our students
- Developing strong TSR

## Peer & Support Relationship

- Building multiple webs of positive relationships and peer support

## Working Together

- Working out differences to achieve common goals
- Appreciating classmates as unique individuals

## Inclusive Classroom

- Showing care and empathy towards one another
- Intermingling and mutual support

# Mr Ooi Wei Yong HOD EdTech



Jurong Secondary School

忠·勤·诚·爱

*Loyalty . Industry . Sincerity . Love*

# National Digital Literacy Programme



Jurong Secondary School

忠·勤·诚·爱

*Loyalty . Industry . Sincerity . Love*

# Overview of the National Digital Literacy Programme and the PLD Initiative



Jurong Secondary School

忠 . 勤 . 诚 . 爱

*Loyalty . Industry . Sincerity . Love*



# The National Digital Literacy Programme (NDLP)

1. The NDLP was launched in March 2020 to **make digital learning inclusive** by **equipping students with the digital skills** to be future-ready.
2. Under the NDLP, every secondary school student will **own a school-prescribed personal learning device (PLD)**. Students may use funds from their Edusave Account to pay for the PLD.



## Intended Outcomes of the PLD Initiative

In JSS, your child will be using PLDs to:

**Support the  
Development of  
Digital Literacy**

**Support Self-  
Directed and  
Collaborative  
Learning**

**Enhance Teaching  
and Learning**



**Jurong Secondary School**

忠·勤·诚·爱

Loyalty . Industry . Sincerity . Love

# Supporting Student in the Safe and Effective Use of Devices



Jurong Secondary School

忠 . 勤 . 诚 . 爱

*Loyalty . Industry . Sincerity . Love*

## Parents'/Guardians' Role

- We would like to partner parents/guardians so that that students are well supported in their use of technology for learning.
- As parents/guardians, you can help in the following ways:
  - Model good digital habits for your child/ward e.g. parents/guardians not using devices during family meals.
  - Know your child/ward well and have conversations with your child/ward about safe and responsible use of technology.
  - **Set ground rules for internet/device usage.**
  - Encourage your child/ward to use productivity tools using his/her PLD, to organise information and simplify tasks for efficiency.

SCHOOLBAG  
THE EDUCATION NEWS SITE

HOME EDUCATION FEATURES TEACHERS' DIGEST MULTIMEDIA FAQ

Home > [Understanding Cyber Wellness](#)

Understanding Cyber Wellness

03 DEC 2015



Parents can set a good example at home in the use of technology and play an active role in guiding our children to navigate in cyberspace.



Jurong Secondary School

忠·勤·誠·愛

Loyalty . Industry . Sincerity . Love

# Role of the DMA in Providing a Safer Digital Environment for Learning



Jurong Secondary School

忠 . 勤 . 诚 . 爱

*Loyalty . Industry . Sincerity . Love*



# DMA Details

## Device Management Application (DMA)

### During School hours: 6.30 am – 6 pm

- Only School Apps will be available.

### After School hours: 6 pm – 11 pm

- Parents can choose from 3 types of configurations

### Bedtime: 11 pm – 6.30 am

- iPad will be disabled to encourage students to have enough sleep.

MOE and the school will set the level of web content filtering, including filtering out objectionable content or content that may not be conducive to teaching and learning (e.g. social media, pornography, gambling, or websites containing extremist content)



Jurong Secondary School

忠 . 勤 . 诚 . 爱

Loyalty . Industry . Sincerity . Love

# DMA Details

## DMA - After School hours: 6pm – 11pm

1. After-School DMA Parent Options provide parents with the flexibility in managing your child's/ward's use of PLD after school hours.
2. The following tables outline the different levels of restrictions, controls, and monitoring for each After-School DMA Parent Option.

Default	Option A	Option B
<b>In-school DMA settings will continue after school hours</b>	<b>DMA settings can be modified by Parents/Guardians after school hours</b>	<b>DMA will be inactive* after school hours</b>
For parents/guardians who want their child's/ward's use of the device to be restricted only to teaching and learning and prefer to leave it to the school to decide on DMA settings after school hours.	For parents/guardians who prefer to take charge of the level of restrictions for their child's/ward's use of the device after school hours regulated by the DMA.	For parents/guardians who do not want their child's/ward's use of the device after school hours to be regulated by the DMA at all.

\*No data will be collected after school hours when the DMA is inactive.

- Having default school settings continue after school hours is the best option for parents/guardians who prefer not to, or do not feel ready to manage their child's/ward's device use on their own.
- Parents/guardians can request to change their choice of DMA settings, which is the existing practice.

# Support for Parents/Guardians

Parents/guardians play a crucial role in guiding your child/ward to use devices responsibly and safely. DMA complements your efforts in supporting your child/ward as they navigate the digital space. Here are some resources that you can refer to:

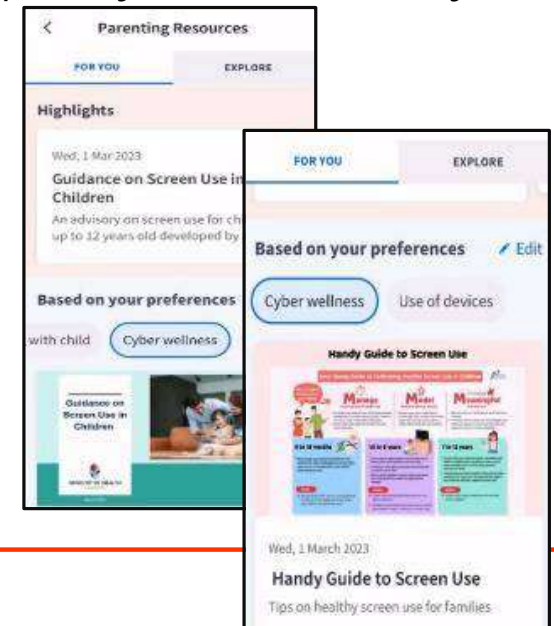
## [A. Parent Kit](#)



## [B. Bite-size tips and advice via Parentingwith.MOEsg Instagram](#)



## [C. Resources from MOE and other agencies \(available on resources repository in Parents Gateway\)](#)



## Support for Parents/Guardians

Parents/guardians may wish to consider the following questions to decide the After-School DMA Parent Option that best suits your child/ward.

### **A. Child's/ward's current device usage habits**

- How much time does my child/ward spend on their device?
- How well is my child/ward able to regulate their device usage on their own?
- Does my child/ward get easily distracted while doing online learning?

### **B. Parents'/Guardians' involvement**

- How confident and familiar am I with managing my child's/ward's cyber wellness?
- Are there existing routines and open conversations on the use of the Internet at home?
- Am I aware of how to prevent different types of cyber threats that my child/ward might face?

# Device and Funding Information



Jurong Secondary School

忠·勤·誠·愛

*Loyalty . Industry . Sincerity . Love*



# Device and Funding Details

## The Personal Learning Device

### **Apple iPad 10.9” 10th Gen Bundle**

- Processor: A14 Bionic Processor
- Memory (GB): 4GB
- Storage (GB): 64GB
- Enhanced Bundle Warranty: 3-Year carry-in warranty
- Enhanced Bundle Insurance: 3-Year insurance
- **Apple Pencil (USB-C)**
- **Logitech Ruggedized Combo 4**

The school will be using the latest **iPad 10<sup>th</sup> Gen 10.9-inch** for teaching and learning.

**Estimated Total Cost(with GST) for the whole bundle: \$853.40**

The school chose the device with these considerations:

- Portability
- Durability
- T&L affordances



Jurong Secondary School

忠 . 勤 . 诚 . 爱

Loyalty . Industry . Sincerity . Love

# Device and Funding Details

## The Personal Learning Device



**iPad 10<sup>th</sup> Gen 10.2"**  
**64GB with stylus**  
**and case with**  
**keyboard**

The package includes a **3-year warranty,**  
and **3-year insurance** which includes:

### Insurance Coverage

- Fire
- Lightning
- Power Surges
- Accidental e.g water spillage, drop etc
- Theft due to forcible entry
- Robbery

\*Accidental loss will not be covered by insurance.



Jurong Secondary School

忠 . 勤 . 诚 . 爱

Loyalty . Industry . Sincerity . Love

# Student Tech Support

Technical support will be provided to students through:

- Service Desk in school during breaks and after school
  - Troubleshooting of device issues
  - Solve connectivity issues
  - Collection of devices to be sent to AsiaPac Technology Pte Ltd's service centres for repairs



# Timeline



Jurong Secondary School

忠·勤·诚·爱

*Loyalty . Industry . Sincerity . Love*

# Timeline

Time Frame	Event
By 17 Jan 2025	Parental Consent for Purchase and use of Edusave
Last week of Feb (To Be Confirmed)	Collection of Device in School by Student



Jurong Secondary School

忠 . 勤 . 诚 . 爱

Loyalty . Industry . Sincerity . Love



# Mr Philip Wan

## HOD Student Management



Jurong Secondary School

忠·勤·诚·爱

*Loyalty . Industry . Sincerity . Love*

# Student Management @ JSS

Discipline is necessary to build a **safe and conducive** environment **for all**.

It is an **educative** and **student centric** process, and is possible only when there is **consistency** across the school (**with all**).



Jurong Secondary School

忠 . 勤 . 诚 . 爱

Loyalty . Industry . Sincerity . Love

# Our beliefs ...

- To build the school tone
  - Ensure a safe and conducive environment for all
- To educate
  - Self-Discipline, Good Character, Action Consequences
- To be student centric
  - What else is needed to help the child
    - Student's needs and circumstances



Jurong Secondary School

忠 . 勤 . 诚 . 爱

Loyalty . Industry . Sincerity . Love

# Discipline @ JSS

## EDUCATIVE

- Discipline is a learning process
- Teach students how to develop self-discipline and good character
- Help students understand that their actions carry consequences, and to take responsibility for their actions

## STUDENT CENTRIC

- Putting the student in the center
  - What else, do we need to help the student learn
  - What else, do we need - to ensure that there is a positive classroom experience

## CONSISTENCY

- Everyone has beliefs
  - Consistent in approach
    - The Student Management Guidelines



# Student Management Guidelines



## STUDENT MANAGEMENT GUIDELINES

The following school rules must be observed by all students in the classrooms, within the school grounds, during all school activities and while travelling to and from school. The school reserves the right to review and make amendments to the school rules to ensure that the entire student population is fairly treated.

### 1) CITIZENSHIP AND SCHOOL IDENTITY

- 1.1 Students will stand at attention throughout the flag raising ceremony.
- 1.2 Students who are Singapore citizens must sing the National Anthem and recite the pledge.
- 1.3 Students who are Singapore citizens will take the pledge with the right fist placed over their heart.
- 1.4 Students must sing the school song respectfully.

### 2) SCHOOL ATTIRE

- 2.1 Students are to wear the prescribed school uniform and there should be no modification made to the uniform.
  - 2.1.1 Long pants must not be tapered (i.e. width of pants must be at least 2 inches wide when pulled from the calf and the end of the pants must cover the ankles).
  - 2.1.2 Length of skirts must touch the kneecap and must not be folded at the waist.
- 2.2 The school crest must be prominently displayed at all times.
- 2.3 The school uniform must be worn during morning flag raising ceremony except on dress-down Wednesdays and Fridays or unless otherwise instructed.
- 2.4 Students should be properly attired in school PE, House or orientation T-shirts and school shorts for PE lessons.
- 2.5 Approved class and CCA T-shirts can be worn only during specific occasions, unless otherwise specified. Guidelines can be found in Annex A.
- 2.6 Students can only change into their PE attire prior to their SEL/PE lesson. They must change out of it immediately after the lesson.
- 2.7 Only female pupils are allowed to wear jewellery, in the form of one pair of identical, plain ear-studs measuring no more than 5mm in diameter, one on each ear lobe. Religious ornaments must be worn discreetly/covered up.
- 2.8 Students are to wear shoes and socks based on the following standards:
  - 2.8.1 White-based low-cut shoes which are in 70% white. The remaining 30% must not be in loud or flashy colours
  - 2.8.2 Contains only 1 shoe logo
  - 2.8.3 White shoe laces
  - 2.8.4 Plain white socks without logo visibly worn
- 2.9 For all official school events and functions, students are to report in full school uniform unless otherwise instructed.

E-Student Handbook  
@ JSS Website



Jurong Secondary School

忠·勤·诚·爱

Loyalty · Industry · Sincerity · Love



# Our Approach

**Build partnership** with stakeholders to  
develop every child holistically



Jurong Secondary School

忠·勤·诚·爱

Loyalty · Industry · Sincerity · Love

# Sec One Concern

1. Transition to Secondary School
2. Management of Mobile Device
3. Play that cause discomfort



Jurong Secondary School

忠·勤·诚·爱

Loyalty . Industry . Sincerity . Love

# Conduct Grade

Determined by

1. Disciplinary Record
2. Attendance and Late-coming
3. CCA Attendance
4. Level of fulfilment of student expectations

*Determining factor for school representation, awards and scholarships*



Jurong Secondary School

忠 . 勤 . 诚 . 爱

Loyalty . Industry . Sincerity . Love

# THANK YOU



Jurong Secondary School

忠·勤·诚·爱

*Loyalty · Industry · Sincerity · Love*

**Ms Ong Wei Chen**  
**Covering HOD PE & CCA**





# Overview of CCA Programme

# Objectives of Briefing

CCA as Key  
Student  
Development  
Experiences

Grading of CCA  
(LEAPS 2.0)

CCAs offered in  
JSS

Important notes  
on Choosing of  
CCA



# CCAs as Key Student Development Experiences

- ❑ **Develops character**, inculcate and promote national values, skills and social integration
- ❑ Provides **multiple avenues** to **nurture students** to prepare them for their future work and life

Character & Values

Social-Emotional  
Competencies

21<sup>st</sup> Century  
Competencies

Interests & Talents



Jurong Secondary School

忠·勤·誠·愛

Loyalty · Industry · Sincerity · Love

# CCAs as Key Student Development Experiences at JSS

CCAs  
Student Agency  
Leadership Development  
Career Guidance  
Opportunities for  
Excellence



## STUDENT OUTCOMES

Every Student A Success Story



### Adaptive Thinker

- *Curious*, open to diverse perspectives and contexts
- *Cognitively flexible*, responds nimbly

### Confident Person

- Keen *awareness* of one's own strengths and potential
- *Courageous*, voicing and exchanging ideas spontaneously, *responsibly* and *respectfully*

### Persevering Learner

- *Determined*, takes calculated risks and persists through failure
- *Reflective*, has the will to act and to strive for excellence

### Concerned Citizen

- *Empathetic and caring*, committed to the betterment of our community
- *Rooted* to Singapore, when engaging with global and social issues



Jurong Secondary School

忠·勤·誠·愛

Loyalty . Industry . Sincerity . Love

# IMPORTANT NOTE

At Secondary Level, CCA is **COMPULSORY**

- CCA is graded
- All students must participate in one main CCA
- **If the attendance per semester is <75%**, the student will be given a **FAIR** for conduct grade for that semester



# IMPORTANT NOTE

## TRAINING FREQUENCIES

- 1 – 3 times a week
- 2 – 3 hours per session

## TRAINING DAYS

- Tuesday
- Wednesday
- Friday



Jurong Secondary School

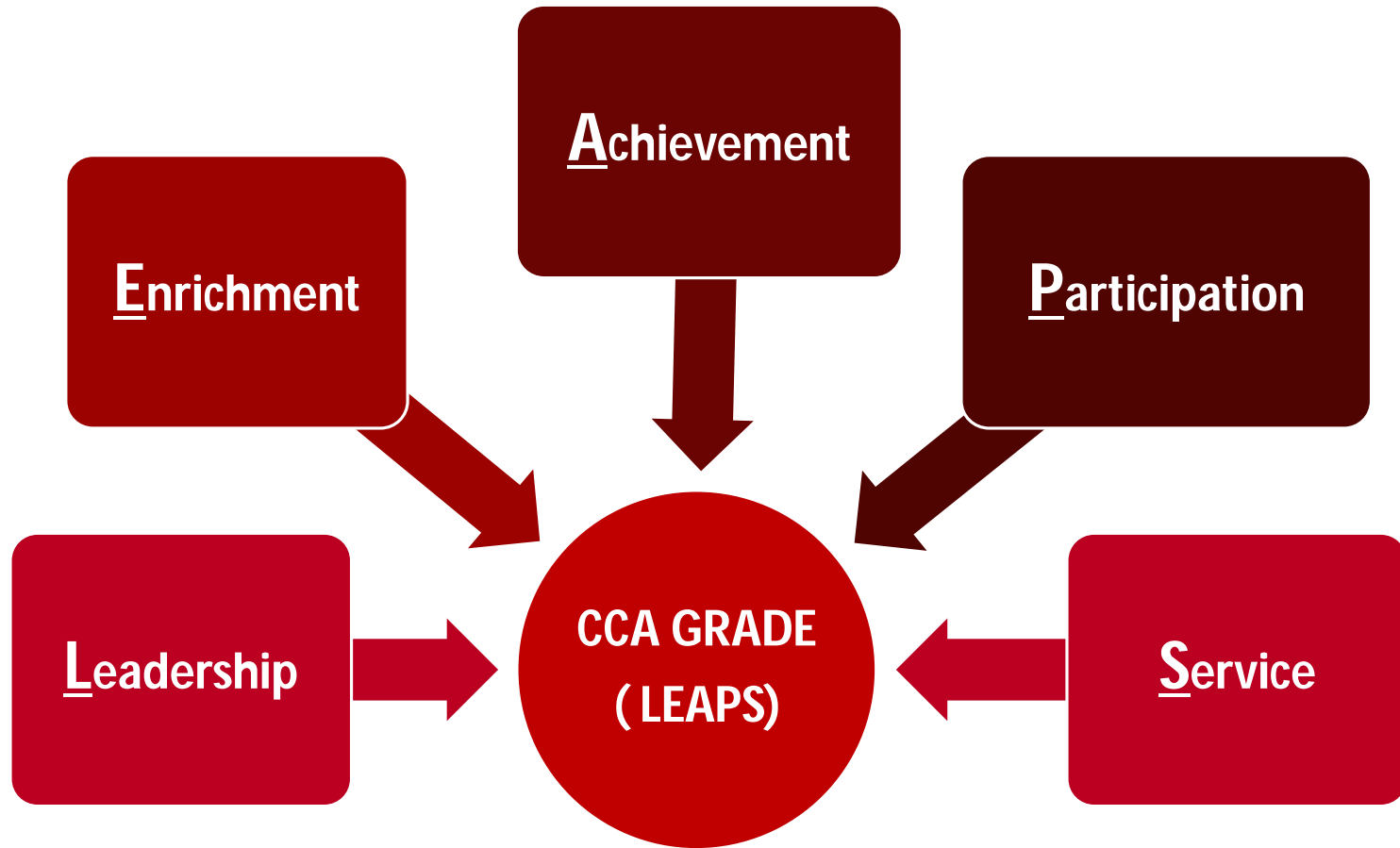
忠·勤·誠·愛

Loyalty · Industry · Sincerity · Love

# CCA Grading (LEAPS 2.0 Scoring System)



# Categories in the LEAPS Scoring System



# Grading Criteria

# Grading Criteria

Levels of attainment of 1 – 5 for

Leadership

Participation

Achievement

Service

There is no level of attainment to

Enrichment



Jurong Secondary School

忠 . 勤 . 诚 . 爱

Loyalty . Industry . Sincerity . Love

# Category: Leadership

- Affirms students' development as a leader
- Development through leadership modules, National Youth Achievement Award and leadership positions

LEVEL	EXPECTATION
1	Completed 2 modules on leadership
2 – 3	<b>National Youth Achievement Award:</b> Level 2: Bronze Level 3: Silver
2 - 5	Recognition of <b>progressive student leadership development</b> through leadership positions



# Category: Achievement

- Affirms students' **efforts** in school/ external organisations' events/ competitions
- Recognises students' diverse interests and talents beyond school

LEVEL	EXPECTATION
1	Represent class / house / CCA ( <b>Intra-school</b> )
2 – 4	Represent <b>school or participate in events or competitions by MOE or external organisations</b>
5	Represent <b>Singapore / MOE</b> in Singapore Schools Competition/ <b>National</b> Project of Excellence (NPOE) / UG HQ in <b>international</b> UG competitions

# Category: Participation

- Affirms students' **sustained involvement** in school-based CCA throughout secondary school education
- In either Sports and Games, Performing Arts, Uniformed Groups or Clubs and Societies

LEVEL	EXPECTATION
1 - 4	Participation in a CCA for 2 to 4/5 years
4 - 5	Continuous involvement in the <b>same</b> CCA for 4/5 years
3 - 5	<b>Exemplary conduct and active contribution</b> in CCA with at least 3 years of participation in any CCA

# Category: Service

- Affirms students' contributions to the community as **responsible and active citizens**
- Through JSS' Values-In-Action (VIA) programmes (school and student-initiated)

LEVEL	EXPECTATION
1 - 4	<b><u>Highest level attained in a combination of:</u></b> Number of <b>hours of service</b> Involvement in <b>VIA projects</b>
5	<b>Student-initiated</b> VIA project that make a impact the community <b>beyond the school</b>

# CCA Grading for Entry into Post-Secondary Institutions

## Junior colleges and Millenia Institute

- CCA grade "Excellent"  
= **2** bonus points
- CCA grade "Good"  
= **1** bonus point

## Polytechnic or ITE course

- CCA points can be used to compete for places

# CCAs Offered in JSS



## Clubs and Societies

Media & Visual Arts  
Science Explorers



## Sports

Dragon Boat (Boys)  
\*Badminton (Boys)  
\*Basketball  
\*Cross Country  
\*Volleyball (Girls)  
\*Pre-selected students



## Performing Arts

Choir  
Concert Band  
Contemporary Dance  
Guzheng Ensemble  
English Drama



## Uniformed Groups

Girl Guides  
National Cadet Corps  
(Land/Boys)  
National Police Cadet Corps  
Red Cross Youth  
Scouts (Boys)



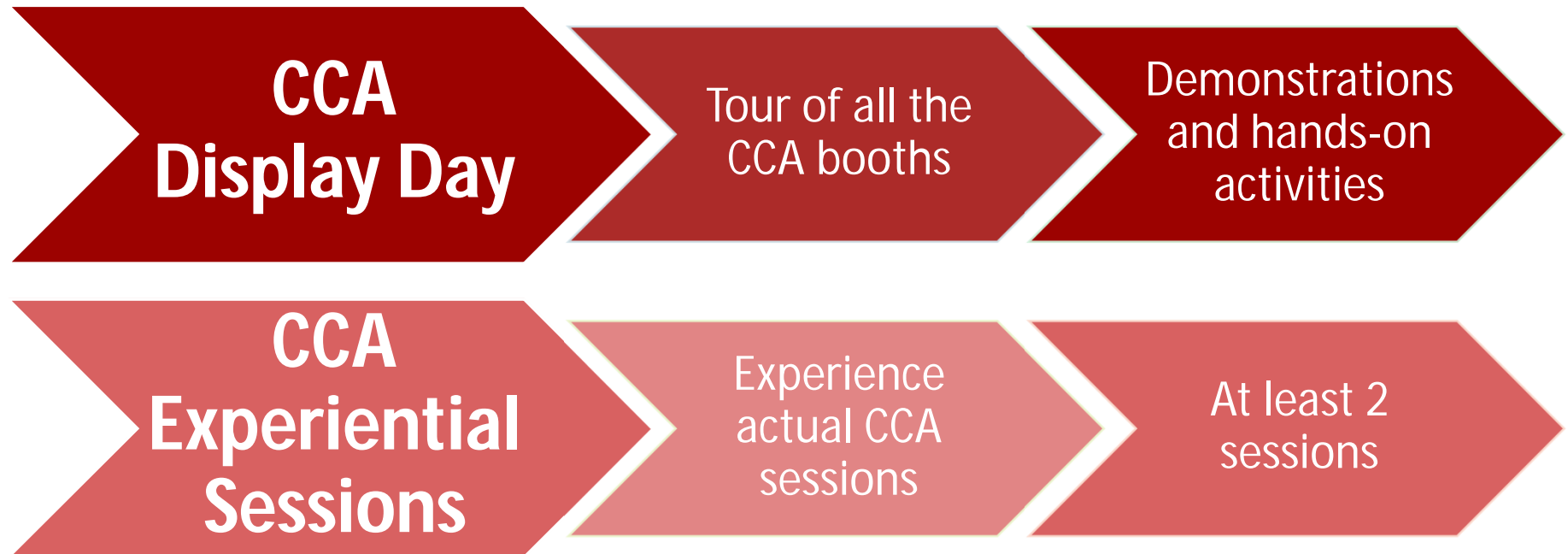
# Important Notes on Choosing of CCA

---





# Helping Your Child Choose the Right CCA



Helping Your Child Choose the Right CCA

# TIMELINE

**Sec 1 MTP and  
CCA Display Day**  
(11 Jan)

**CCA Experiential  
Sessions**  
(14 Jan to 7 Feb)

**Submission of  
CCA Options Form**  
(7 Feb)

**CCA Allocation**  
(28 Feb)



Jurong Secondary School

忠·勤·誠·愛

Loyalty . Industry . Sincerity . Love

# Key info on Experiential Sessions

- Sessions to be conducted from **14 Jan to 7 Feb 2025**.
- Registration exercise starts at **11 Jan (12.00 noon)** and ends on **13 Jan (5.00pm)**.



Students who have been pre-selected for **Basketball, Volleyball, Badminton and Cross Country** and admitted for **DSA-STEM** **NEED NOT** attend the Experiential Sessions.

# Strategic Participation Co-Curricular Activities (SP CCA) – Water Polo , Ethnic Dance & Canoeing

- **SP-CCA (Water Polo)**
- **SP-CCA (Canoeing)**
  - Student can take up
  - Do not need school-based CCA
  - Interested students are to **attend at least one of the try out sessions\*** before registering for the programme.
- **SP-CCA (Ethnic Dance)**
  - For students in Dance CCA
  - Extend and enrich school-based experiences
  - More information will be out in Mid-Jan

**\*14 Jan 2025 (Tue), 16 Jan 2025 (Thu) or 18 Jan 2025 (Sat)**

# Participation in NSG competitions NOT offered in JSS

- Individual sports CCA under the NSG competition
  - Eg, Golf, Fencing, Swimming, Wushu

# FOR QUERIES



**Ms Ong Wei Chen**  
[ong\\_wei\\_chen@moe.edu.sg](mailto:ong_wei_chen@moe.edu.sg)



**Mdm Wang Cuifeng**  
[wang\\_cuifeng@moe.edu.sg](mailto:wang_cuifeng@moe.edu.sg)



**6265 5980 (School contact no)**



**Jurong Secondary School**

忠 . 勤 . 诚 . 爱

Loyalty . Industry . Sincerity . Love



# THANK YOU



Jurong Secondary School

忠·勤·诚·爱

*Loyalty · Industry · Sincerity · Love*