

# Secondary 3 - 5 Meet-the-Parents

## 28 Feb 2025



# Programme Flow

- Address by Principal
- Level & CCE Focus for Upper Secondary
- Sharing on Progression Pathways
  - O-Levels
  - N-Levels [N(A)]
  - N-Levels [N(T)]

# Address by Principal Ms Yeo Siok Ee



# Our Staff

# New & Redesignated Key Personnel



Mdm Zheng Jieyun  
*Covering HOD  
Mathematics*



Mr Ooi Wei Yong  
*HOD Education Technology*



Mr Nur Izhar Bin Sa'at  
*Covering HOD CCE*



Ms Ong Wei Chen  
*Covering HOD PE & CCA*

# New & Redesignated Key Personnel



*Mr Darius Sim  
Covering SH  
English Language  
/Literature*



*Mdm Amy Wu  
Covering SH Mathematics*



*Mdm Wang Cuifeng  
Covering SH PE & CCA*



*Mr Sim Guo Chen  
SH Assessment*

# New & Redesignated Teacher Leaders



Mr Richard Koh  
*LT English Language*



Ms Shuryani  
*Covering ST CCE*

# New ECG Counsellor



Ms Ivy Nyam  
*Education & Career Guidance  
Counsellor*



# A SCHOOL OF GROWTH

OUR VISION



OUR MISSION



OUR VALUES



Champions of Mind,  
Leaders with Heart

Journeying Together  
Shaping Values  
Striving Towards Excellence

Loyalty Industry  
Sincerity Love



## STUDENT OUTCOMES

*Every Student A Success Story*



### Adaptive Thinker

- **Curious**, open to diverse perspectives and contexts
- **Cognitively flexible**, responds nimbly

### Confident Person

- Keen **awareness** of one's own strengths and potential
- **Courageous**, voicing and exchanging ideas spontaneously, **responsibly** and **respectfully**

### Persevering Learner

- **Determined**, takes calculated risks and persists through failure
- **Reflective**, has the will to act and to strive for excellence

### Concerned Citizen

- **Empathetic and caring**, committed to the betterment of our community
- **Rooted** to Singapore, when engaging with global and social issues

## THE 4 LEVEL OUTCOMES



# A SCHOOL OF GROWTH

## OUR VISION

Champions of Mind,  
Leaders with Heart

## OUR MISSION

Journeying Together  
Shaping Values  
Striving Towards Excellence

## OUR VALUES

Loyalty Industry  
Sincerity Love



## STUDENT OUTCOMES

*Every Student A Success Story*



### Adaptive Thinker

- **Curious**, open to diverse perspectives and contexts
- **Cognitively flexible**, responds nimbly

### Confident Person

- Keen **awareness** of one's own strengths and potential
- **Courageous**, voicing and exchanging ideas spontaneously, **responsibly** and **respectfully**

### Persevering Learner

- **Determined**, takes calculated risks and persists through failure
- **Reflective**, has the will to act and to strive for excellence

### Concerned Citizen

- **Empathetic and caring**, committed to the betterment of our community
- **Rooted** to Singapore, when engaging with global and social issues

## THE 4 LEVEL OUTCOMES



Jurong Secondary School

忠 · 勤 · 诚 · 爱

Loyalty · Industry · Sincerity · Love



# STUDENT OUTCOMES

## *Every Student A Success Story*



### Adaptive Thinker

- ***Curious***, open to diverse perspectives and contexts
- ***Cognitively flexible***, responds nimbly



Jurong Secondary School

忠 · 勤 · 诚 · 爱

Loyalty · Industry · Sincerity · Love

# Opportunities to Grow as Adaptive Thinker

*Curious, open to diverse perspectives and contexts*

*Cognitively flexible, responds nimbly*

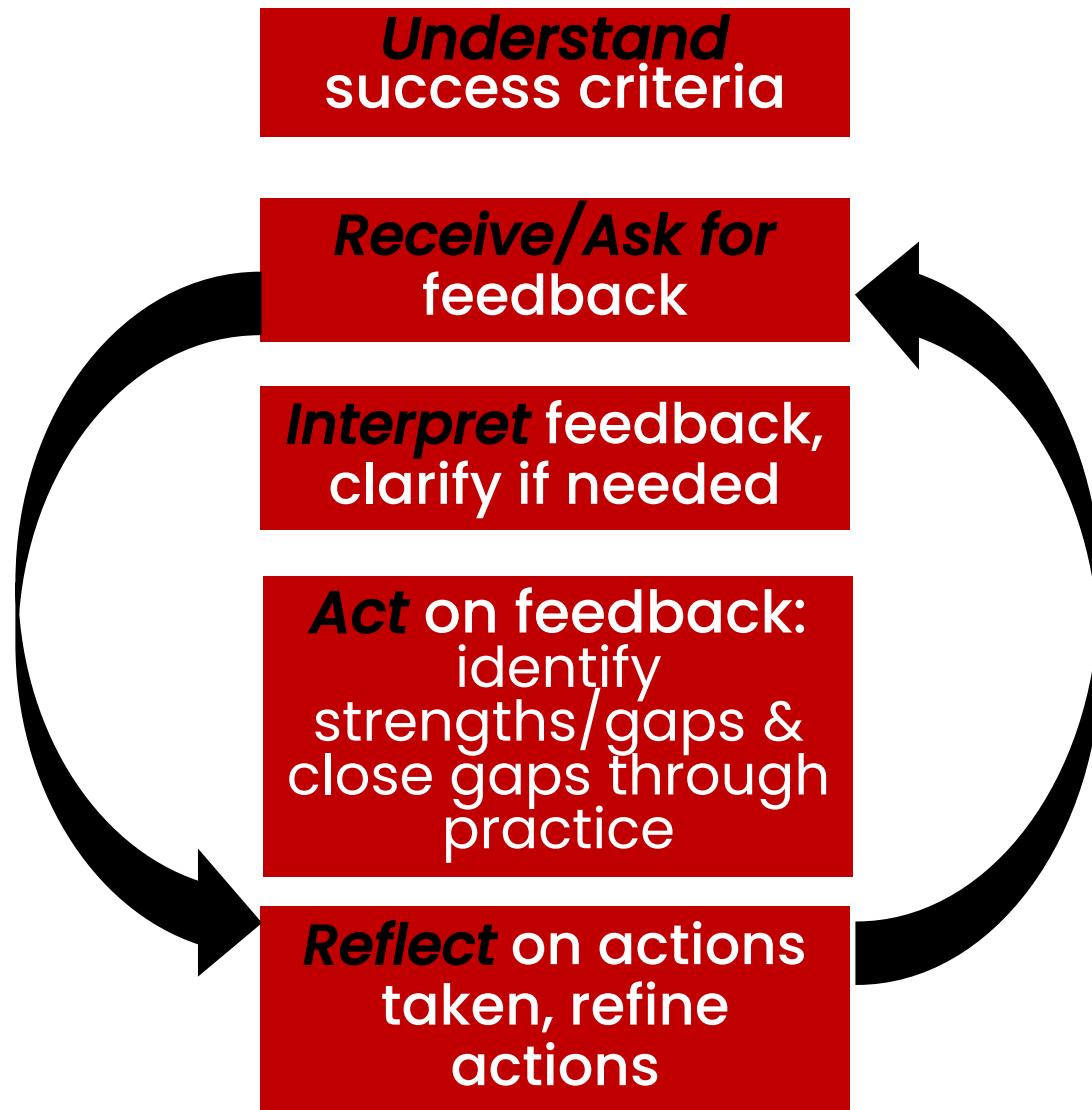
- Responding to feedback: curious, reflects, clarifies, refines actions for growth
- Embracing diverse perspectives in discussions: acknowledges others' valid points, draws fresh insights
- Refines revision & study techniques: assesses own learning, reviews study strategies to enhance effectiveness
- Responding nimbly to unexpected changes: acknowledges and addresses problems that arise during presentation, competition, matches, school events and etc.



Jurong Secondary School

忠 · 勤 · 诚 · 爱

Loyalty · Industry · Sincerity · Love



**Success  
criteria for  
securing  
your choice  
post-  
secondary  
courses?**



**Jurong Secondary School**

忠 · 勤 · 诚 · 爱

Loyalty · Industry · Sincerity · Love



## STUDENT OUTCOMES

*Every Student A Success Story*



### Adaptive Thinker

- **Curious**, open to diverse perspectives and contexts
- **Cognitively flexible**, responds nimbly

### Confident Person

- Keen **awareness** of one's own strengths and potential
- **Courageous**, voicing and exchanging ideas spontaneously, **responsibly** and **respectfully**

### Persevering Learner

- **Determined**, takes calculated risks and persists through failure
- **Reflective**, has the will to act and to strive for excellence

### Concerned Citizen

- **Empathetic and caring**, committed to the betterment of our community
- **Rooted** to Singapore, when engaging with global and social issues

# Moving Forward...

## Focus in Term 2:

- Stepping up to be CCA Leaders
- Mentoring of Juniors

## Focus for Terms 3 & 4:

- Gearing up for examinations
- National-Level Commemorative Events

# MISSION

## Journeying Together

*Working in partnership with **diverse stakeholders***

## Shaping Values

*to help our students live out our **school values***

## Striving Towards Excellence

*and pursue **excellence** in all that they do.*

We journey together with our students with the support of **our staff, their parents, SAC, alumni, industry partners and the Taman Jurong community and beyond.**

We shape our students' values and help them build **Loyalty, Industry, Sincerity and Love.**

We support our students in their pursuit of excellence in their **studies, CCA and interests.**

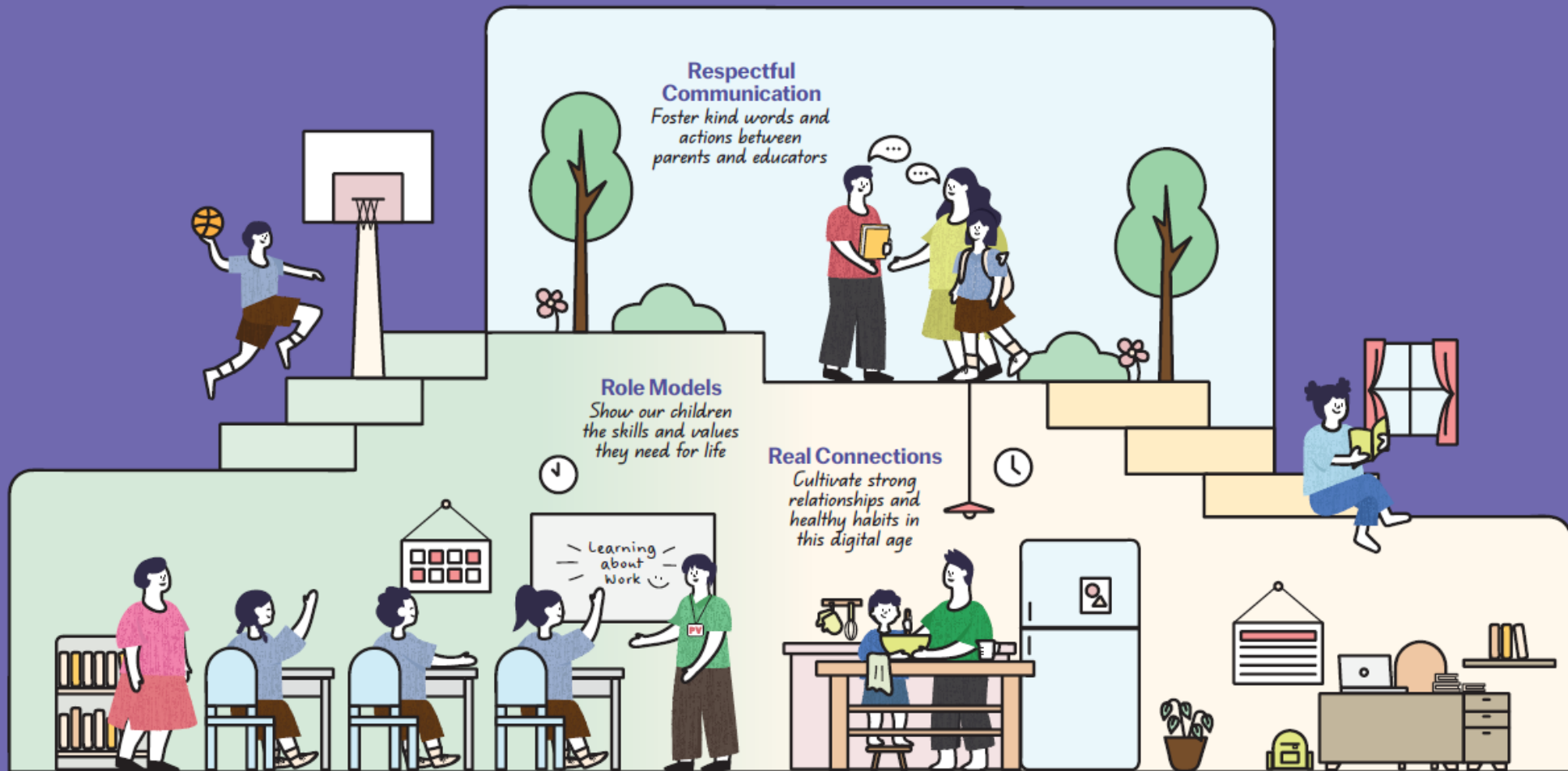


Jurong Secondary School

忠 · 勤 · 诚 · 爱

Loyalty · Industry · Sincerity · Love

# Raising a Happy, Confident, and Kind Generation Together





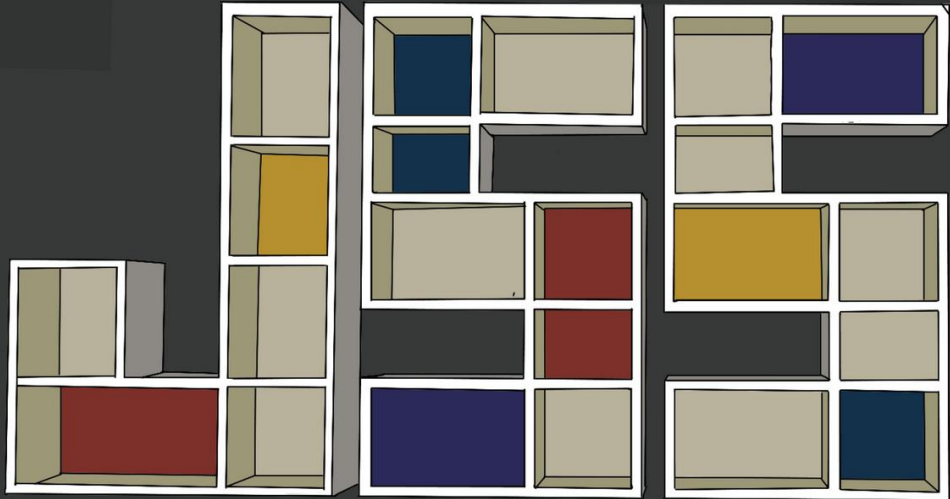
Singapore

Teachers are not here to serve parents but to be partners in a child's education, says Chan Chun Sing



**Thank you for your meaningful and supportive partnership!**

**THANK YOU**



**Every  
Child a  
Success  
Story**



summerood

# The Upper Secondary Journey

**Mr Aaron Tang**  
**Ms Chua Syin Thian**



Mr Aaron Tang  
*Year Head,  
Upper Secondary*



Ms Chua Syin Thian  
*Assistant Year Head,  
Upper Secondary*

# Our JSS Journey

Secondary 1	Secondary 2	Secondary 3	Secondary 4/5
Reflective Learner	Courageous Contributor	Resilient Leader	Inspirational Role Model
<p><b>All Aboard:</b> Strong Alone, Unbroken Together</p>  <p><i>All Aboard</i></p>	<p><b>Take Flight:</b> To Infinity and Beyond</p>  <p><i>Take Flight</i></p>	<p><b>Mission (I'm) Possible:</b> Keep Going, Keep Growing</p>  <p><i>Mission (I'm) Possible</i></p>	<p><b>Above and Beyond:</b> Leaders of Tomorrow</p>  <p><i>Above &amp; Beyond</i></p>

# Resilient Leader

- Curious, open-minded and empathetic
- Receptive to different perspectives and approaches of other groups within the community/nation
- Confident Communicator, having the conviction to speak up on various issues
- Resilient learner who display mental grit when coping with stress



# Inspirational Role Model

- Inspirational through one's passion and pursuit of excellence
- Confident Communicator
- Resilient learner who display mental grit when coping with stress



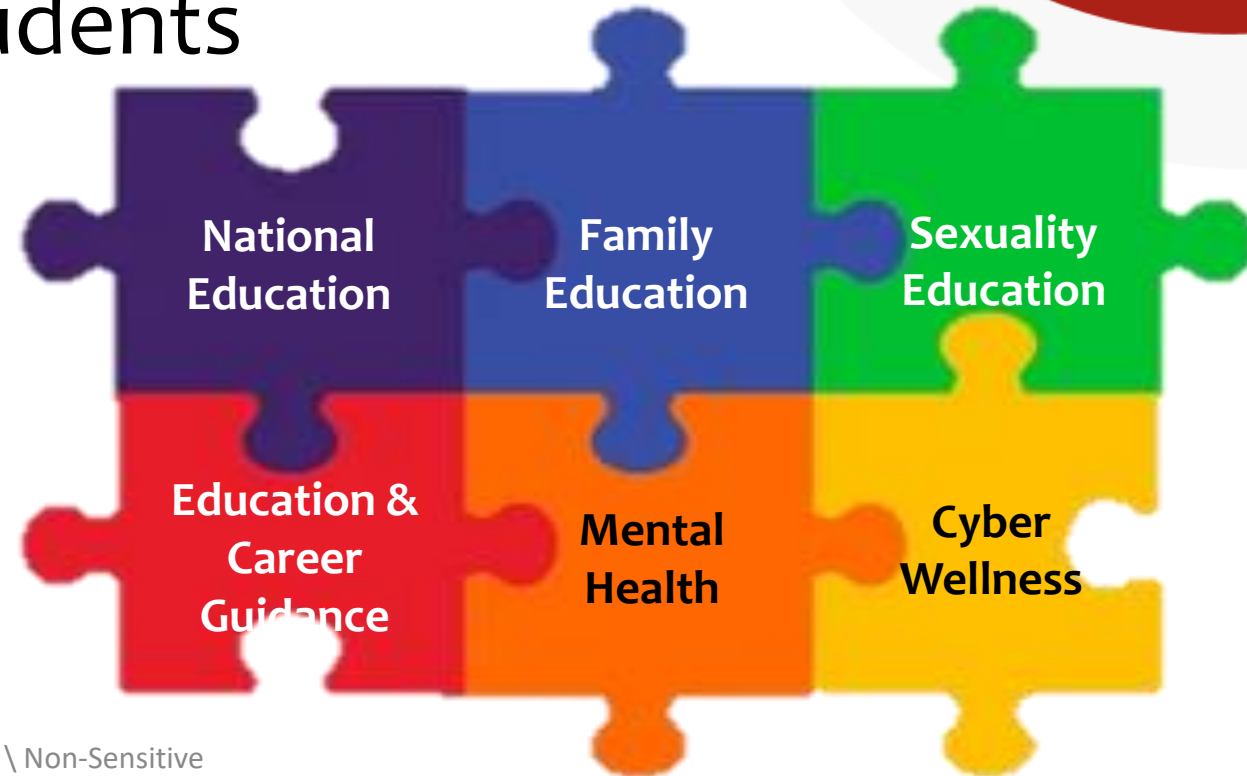
# Our Support in Teaching & Learning

- Quality Learning Experience
- ASAP, SSP & After school consultations
- Extended Study Programme
- Timed Practice (graduating cohort)



# Building Character & Social-Emotional Competencies

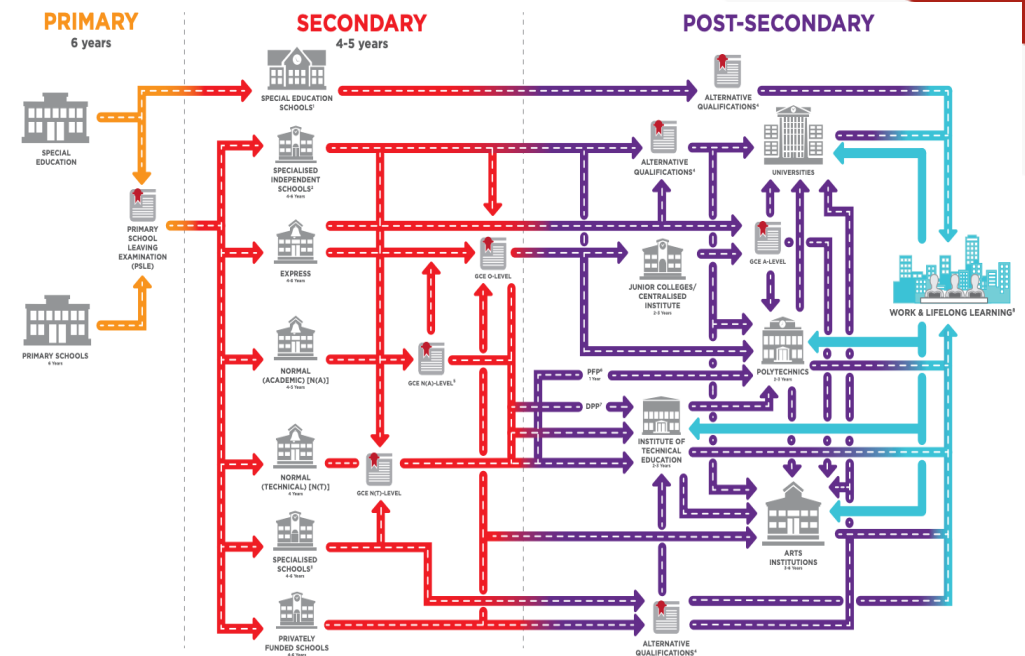
- 1-to-1 interactions with students
- Peer Support Culture
- CCE Curriculum
- Building positive habits
- Affirmation at various platforms





# Intentional ECG Experiences

- ECG Talks, Workshop & Career Seminar
- Polytechnic Open Houses
- JC Immersion Programme
- Experience ITE Programme
- Building of e-Portfolio
- ECG Referral & Counselling



# Your Support

- Exploring aspirations & possibilities
- Encouraging the development of a system of habits
  - Timely help seeking
  - Readiness for & receptiveness to feedback
  - Self-management: physical and socio-emotional well-being
  - Reasonable usage of mobile devices
  - Attendance & punctuality

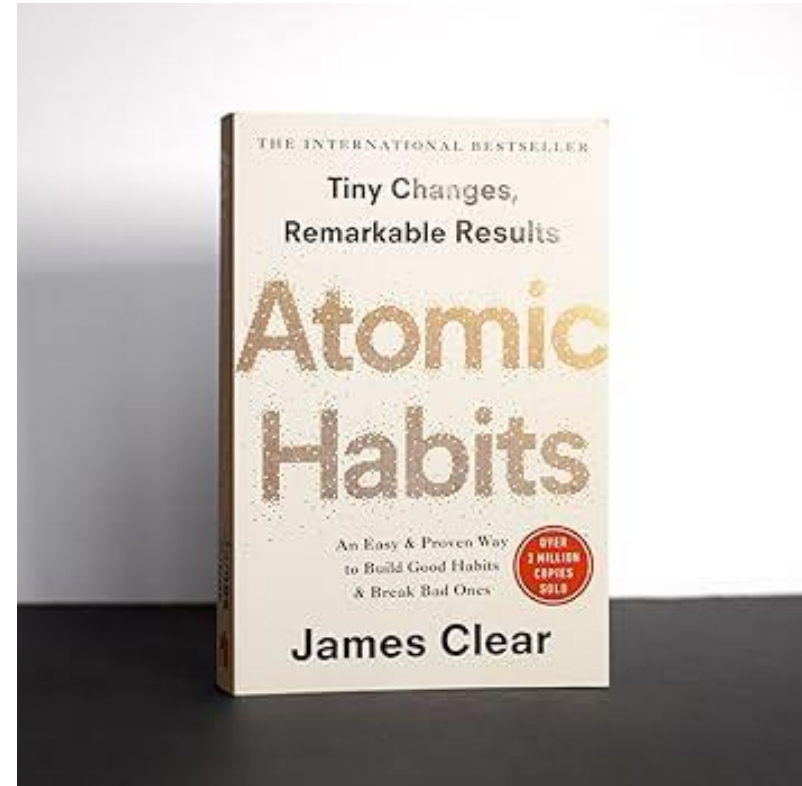


Image Credit: <https://www.amazon.sg/Atomic-Habits-life-changing-million-bestseller/dp/1847941834>



Jurong Secondary School

忠 · 勤 · 诚 · 爱

Loyalty · Industry · Sincerity · Love

# School Policy Updates

- Weighted Assessment
- Usage of Mobile Devices
- Communication with Students and Parents

# Weighted Assessment

□ Weighted Assessment (WA) can be in the form of:

## 1. Written Assessment (Class Test)

## 2. Alternative Assessment (AA)

- Performance tasks,
- Portfolio work,
- Project work,
- Case studies and
- Practical work.



Jurong Secondary School

忠 · 勤 · 诚 · 爱

Loyalty · Industry · Sincerity · Love

# Weighted Assessment

## Absence/ Late Submission for WA

With Official Valid Reason	WA Grade recorded
Participation in official events (e.g. Singapore Youth Festival, National School Games)	VR (Valid Reason)
Sickness accompanied by valid Medical Certificate <i>*TCM Medical Certificate and Parents Letter are not accepted</i>	MC (Medical Certificate)

1. Students should contact their respective teacher (within five working days) to do the missed WA as practice, which will be graded for feedback on their learning.
2. These marks will not contribute to the overall assessment score.



# Weighted Assessment

## Late Submission of Alternative Assessments:

Extension of:	Marks awarded
1 week	90% of attained grade
Beyond 1 week	No mark awarded

- ❑ Absence or late submission of WA **without a valid reason**, or with only a parent's letter (for medical reasons), will result in the WA grade being recorded as **AB** (i.e., zero marks).



# Usage of Mobile Devices

- All students are to **lock their mobile devices in their lockers until the last timetabled lesson of the day**, includes self-study period (SSP), lunch break and when teacher(s) is not in class, i.e.
  - Monday, Tuesday, Thursday and Friday- from 7:20am onwards
  - Wednesday- 8.20am onwards
- During school approved activities (e.g. CCAs, learning journeys, camps), permission to use mobile devices (e.g., school projects) must be obtained from the relevant teacher-in-charge.



# Usage of Mobile Devices

- Students are to **only** use their personal learning devices (PLD) for **technology-based teaching and learning**.
- Consequences will be meted out to students' who are found with mobile devices during curriculum time. (e.g. Parent's informed, Phone Confiscated, Conduct Grade Downgrade, etc)
- Mobile devices are the personal responsibility of the students. The school will not be responsible for any loss or damage of mobile devices.





# Communication with Students & Parents

To foster a healthier work-life rhythm for staff, students, and parents, while also supporting our students in developing essential Executive Functioning (EF) skills, our policies have been updated as follows:

- **Communication with students** will be conducted only via **Google Classroom**, except in cases of emergencies.
- **Communication with parents** will primarily be through **Email or Parents' Gateway**, with exceptions made for emergencies.



# In Summary

## Weighted Assessments

### Valid Reasons:

- Medical Leave (w/ MC)
- Official School Events (e.g. NSG, SYF)

**No make-up assessments** but students can attempt for feedback

## Mobile Devices

Kept in **school lockers during curriculum hours**, including breaks.

**Permission to be sought** for after-school programmes

## Communications

### Parents:

- **Parents Gateway**
- Email
- General Office

### Students:

- **Google Classroom**
- Face-to-Face



# Sharing on Post-Secondary Progression Pathways

# Sharing on Progression Pathways

Sharing Sessions	Venue
Sharing on Post- Secondary Progression Pathways [for <b>O-Level students</b> ]	Remain in <b>Hall</b>
Sharing on Post- Secondary Progression Pathways [for <b>Normal (Academic)</b> N-Level students]	<b>Pulse Studio</b> (Level 1)
Sharing on Post- Secondary Progression Pathways [for <b>Normal (Technical)</b> N-Level students]	<b>Newton Room</b> (Level 3)