

Mr Ooi Wei Yong

HOD EdTech

National Digital Literacy Programme



AI CAN MEANINGFULLY TRANSFORM TEACHING AND LEARNING

MOE harnesses Artificial Intelligence (AI) as a strategy¹ to achieve the desired student outcomes, empowering self-directed learning and customising students' learning experiences.

Three AI-enabled systems are now available on the Student Learning Space (SLS):



Adaptive Learning System

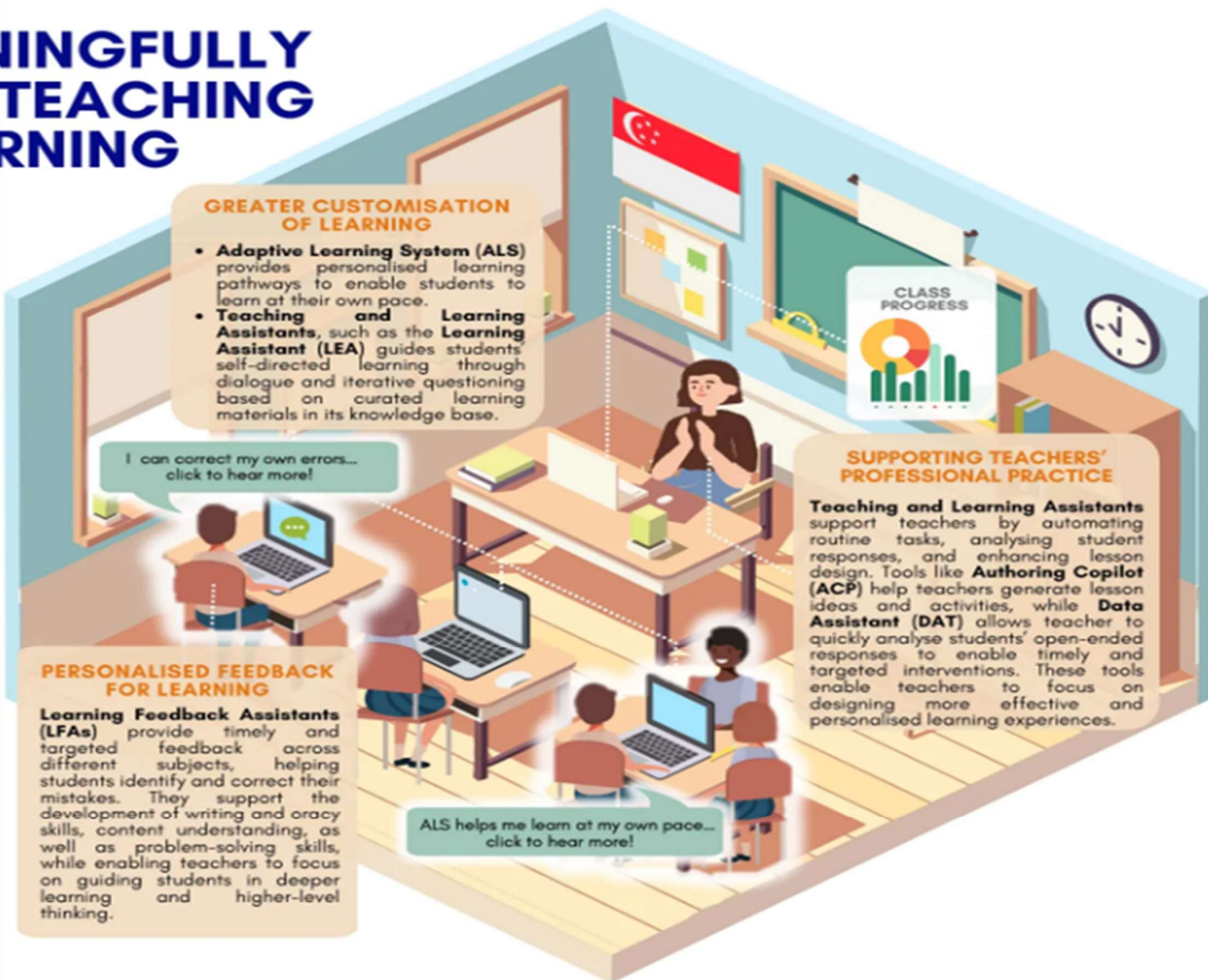


Teaching and Learning Assistants



Learning Feedback Assistants

FIND OUT MORE ABOUT THEM ON THE NEXT PAGE >>>



¹ The National AI strategy announced in November 2019 outlined a plan for Singapore to deepen our understanding and use of AI technologies to improve lives. MOE's EdTech Plan also guides the development of these AI systems for learning.

Overview of the National Digital Literacy Programme and the Personal Learning Device Initiative

The National Digital Literacy Programme (NDLP)

1. The NDLP was launched in March 2020 to **make digital learning inclusive by equipping students with the digital skills** to be future-ready.
2. Under the NDLP, every secondary school student will **own a school-prescribed personal learning device (PLD)**. Students may use funds from their Edusave Account to pay for the PLD.

Intended Outcomes of the PLD Initiative

In JSS, your child will be using PLDs to:

**Support the
Development of
Digital Literacy**

**Support Self-
Directed and
Collaborative
Learning**

**Enhance Teaching
and Learning**

Role of the Device Management Application (DMA) in Providing a Safer Digital Environment for Learning

DMA Details

Device Management Application (DMA)



During School hours: 6.30am – 6pm

- Only School Apps will be available.



After School hours: 6pm – 10.30pm

- Parents can choose from 3 types of configurations



Bedtime: 10.30pm – 6.30am

- iPad will be disabled to encourage students to have enough sleep.

MOE and the school will set the level of web content filtering, including filtering out objectionable content or content that may not be conducive to teaching and learning (e.g. social media, pornography, gambling, or websites containing extremist content)

DMA Details

DMA - After School hours: 6pm – 10.30pm

| Default | Option A | Option B |
|--|---|---|
| <p>In-school DMA settings will continue after school hours</p> | <p>Parents/Guardians can modify the DMA settings after school hours</p> | <p>DMA will be inactive after school hours</p> |
| <p>Only School Apps will be available in the iPad.</p> <p>Recommended</p> | <p>Parents to choose what App is available for your child.</p> <p>(Note that the configuration is much more complex than the usual system.)</p> <p>For parents who are very experienced with Parental Control Apps</p> | <p>Students can install any App in the iPad for after school use</p> <p>No content filtering after school hours</p> |

Note: .For full details of each DMA option, Please refer to the deck of slides attached in the PG notice at the start of the school term.

Device and Funding Information

Device and Funding Details

The Personal Learning Device



**iPad 11" (A16)
128 GB with stylus
and durable case
with keyboard**

The school will be using the latest **iPad 11 inch(A16)** for teaching and learning.

Estimated Total Cost with GST: \$829.30

The school chose the device because of:

- Portability
- Durability
- Touch Screen
- Inking function using stylus
- Keyboard for typing
- Long Battery Life

Device and Funding Details

The Personal Learning Device



**iPad 11" (A16)
128 GB with stylus
and durable case
with keyboard**

The package includes a **4-year warranty**,
and **4-year insurance** which includes:

Insurance Coverage

- Fire
- Lightning
- Power Surges
- Accidental e.g water spillage, drop etc
- Theft due to forcible entry
- Robbery

*Accidental loss will not be covered by insurance.

Timeline

Timeline

| Time Frame | Event |
|------------------|--|
| By 9 Jan 2026 | Parental Consent for Purchase and use of Edusave |
| Last week of Feb | Collection of Device in School by Student |

**School-Home Partnership:
Guiding our students' use of PLD & mobile
devices**

Supporting Your Child's Well-Being Through School-Home Partnership (SHP)

3 areas where we can work together:

1. Respectful Communication



2. Role Models

3. Real Connections

Supporting Your Child's Well-Being Through School-Home Partnership (SHP)

PDLP Resources for Parents

**Cyber
Wellness
Parenting
With
Confidence**



**EdTech
Parenting
With
Confidence**

<https://for.edu.sg/pdlp-jss>