

Mdm Jennyfer Aw

PSG Chairperson

Working together, Strengthening School Home partnership



PSG Networking
5 April 2025

Presented by:
Mr Philip Wan – HOD/Student Management
Ms Zawani – SH/Student Management

 **JURONG SECONDARY SCHOOL**
LOYALTY • INDUSTRY • SINCERITY • LOVE



JSS PSG



Jurong Secondary School
Parent Support Group

JSS Parent Support Group (PSG)

Vision

Collaborative partnership with the School to nurture our children to be “Champions of Mind, Leaders with Heart.”

Mission

Support school programmes by tapping on parents’ expertise and resources so that our children can achieve their fullest potential.



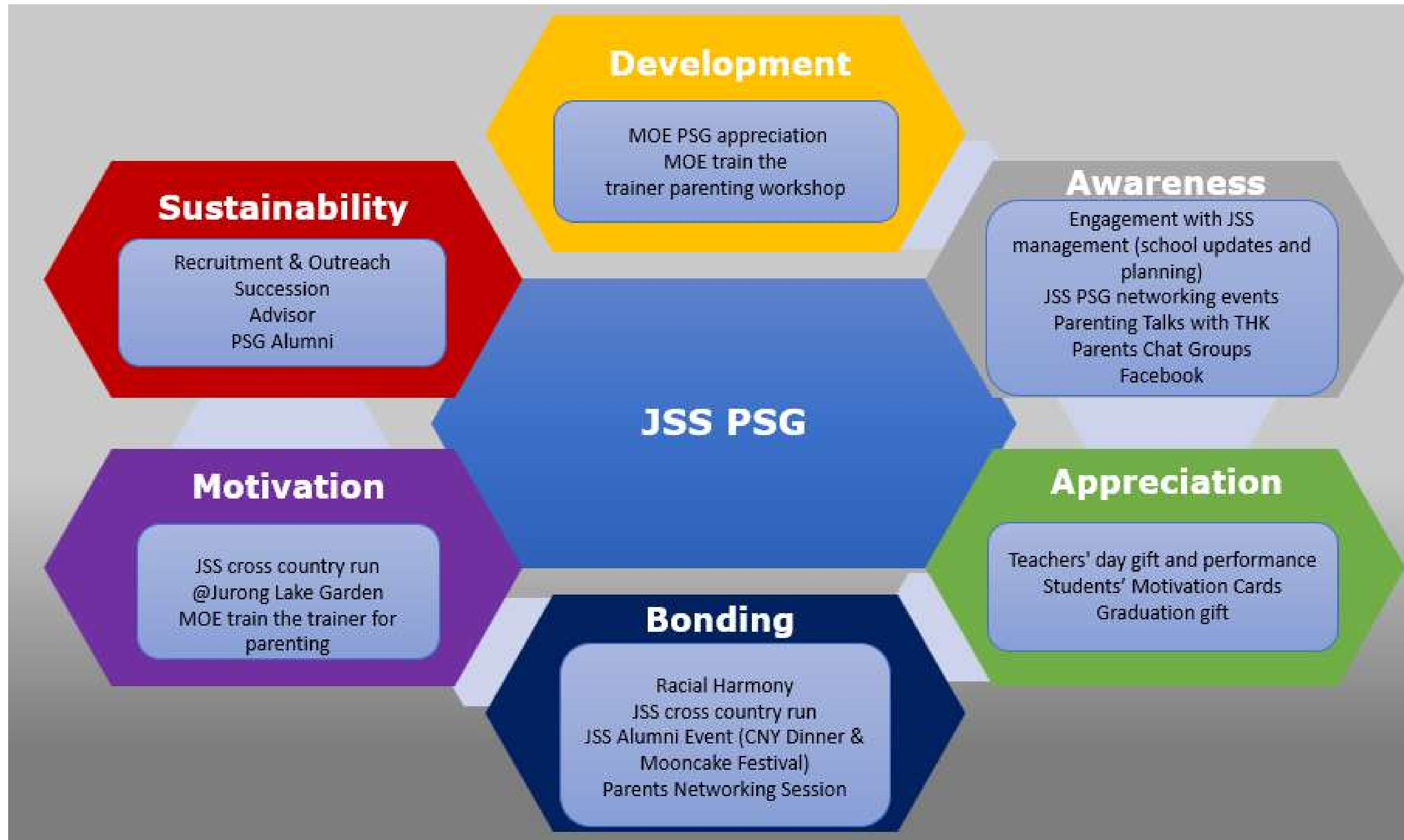
JSS Parent Support Group (PSG)

Objectives

- Facilitate and promote interaction among members of the Parent Support Group
- Facilitate sharing of experiences by parents
- Facilitate communication between parents and school
- Provide support for school programmes
- PSG also participates in school events, e.g. CCA Display Day, Chinese New Year Celebrations, Racial Harmony Day, National Day Commemoration, Teachers' Day Celebrations and Open House



2026 JSS PSG



2026/2027 JSS PSG EXCO

Role	Name of Parent
Chairperson	Mdm Jennyfer Aw
Co-Chairperson	Mr Ben Chor
Co-Chairperson	Mr Cheok Kai Weei
Secretary	Mdm Irene Zheng
Treasury	Mdm Karen Ng
Advisor	Mdm Yusnizan Bte Mohd Talib
EXCO Member	Mdm Liaw Mui Chee
EXCO Member	Mdm Diana Regehr
EXCO Member	Mdm Devaki Suppramaniam
EXCO Member	Mdm Sheena Goh
EXCO Member	Mdm Catherine Ooi
EXCO Member	Mdm Heather Pong
EXCO Member	Mdm Pauline Low
EXCO Member	Mr Kenneth Kee



Parent Networking Sessions



School Activities



Racial Harmony Day



Teachers' Day Celebrations



School Activities



CNY Celebrations & Dinner



Mid Autumn Festival



Graduation



School Activities



CNY Celebrations & Dinner



Mid Autumn Festival



Graduation



Join us @ JSS PSG



Sec 1 Group

- Sec 1 PSG Members
- EXCO Representatives

Join us @ JSS PSG



JSS PSG Whatsapp Group



Mr Philip Wan

HOD Student Management

In partnership with



Building strong families

by strengthening the marital and parent-child relationships



**THYE HUA KWAN
MORAL CHARITIES**

太和觀 THK

Vision: An empowered community where quality care and support services are accessible to all.
Mission: THKMC serves people with diverse needs by providing impactful community services with full respect to race, language and religion.

Sign up now to learn skills to meet both your needs and your children's needs

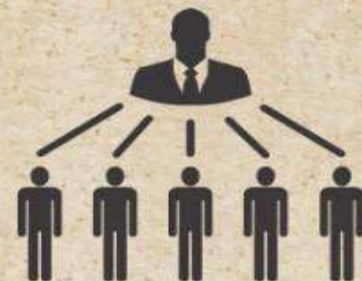
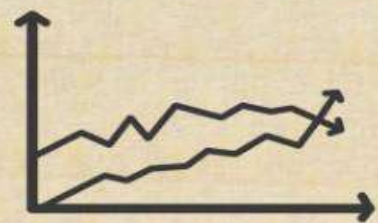
- Fully sponsored!
- Conducted only once a year
- Essential Session:
Friday, 23 January 2026
 - 7 pm – 9.30 pm
 - Online via Zoom



Scan to register



STUDENT MANAGEMENT



Student Management @ JSS

Discipline is necessary to build a **safe and conducive** environment **for all**.

It is an **educative** and **student centric** process,
and is possible only when there is **consistency**
across the school (**with all**).

A SCHOOL OF GROWTH

OUR VISION



Champions of Mind,
Leaders with Heart

OUR MISSION



Journeying Together
Shaping Values
Striving Towards Excellence

OUR VALUES



Loyalty **Industry**
Sincerity **Love**



STUDENT OUTCOMES

Every Student A Success Story



Adaptive Thinker

- **Curious**, open to diverse perspectives and contexts
- **Cognitively flexible**, responds nimbly

Confident Person

- Keen **awareness** of one's own strengths and potential
- **Courageous**, voicing and exchanging ideas spontaneously, **responsibly** and **respectfully**

Persevering Learner

- **Determined**, takes calculated risks and persists through failure
- **Reflective**, has the will to act and to strive for excellence

Concerned Citizen

- **Empathetic and caring**, committed to the betterment of our community
- **Rooted** to Singapore, when engaging with global and social issues

THE 4 LEVEL OUTCOMES



Every JSS Student
A
Responsible Decision
Maker



JURONG
SECONDARY SCHOOL
LOYALTY INDUSTRY SINCERITY LOVE

Student Management Guidelines



STUDENT MANAGEMENT GUIDELINES

The following school rules must be observed by all students in the classrooms, within the school grounds, during all school activities and while travelling to and from school. The school reserves the right to review and make amendments to the school rules to ensure that the entire student population is fairly treated.

1) CITIZENSHIP AND SCHOOL IDENTITY

- 1.1 Students will stand at attention throughout the flag raising ceremony.
- 1.2 Students who are Singapore citizens must sing the National Anthem and recite the pledge.
- 1.3 Students who are Singapore citizens will take the pledge with the right fist placed over their heart.
- 1.4 Students must sing the school song respectfully.

2) SCHOOL ATTIRE

- 2.1 Students are to wear the prescribed school uniform and there should be no modification made to the uniform.
 - 2.1.1 Long pants must not be tapered (i.e. width of pants must be at least 2 inches wide when pulled from the calf and the end of the pants must cover the ankles).
 - 2.1.2 Length of skirts must touch the kneecap and must not be folded at the waist.
- 2.2 The school crest must be prominently displayed at all times.
- 2.3 The school uniform must be worn during morning flag raising ceremony except on dress-down Wednesdays and Fridays or unless otherwise instructed.
- 2.4 Students should be properly attired in school PE, House or orientation T-shirts and school shorts for PE lessons.
- 2.5 Approved class and CCA T-shirts can be worn only during specific occasions, unless otherwise specified. Guidelines can be found in Annex A.
- 2.6 Students can only change into their PE attire prior to their SEL/PE lesson. They must change out of it immediately after the lesson.
- 2.7 Only female pupils are allowed to wear jewellery, in the form of one pair of identical, plain ear-studs measuring no more than 5mm in diameter, one on each ear lobe. Religious ornaments must be worn discreetly/covered up.
- 2.8 Students are to wear shoes and socks based on the following standards:
 - 2.8.1 White-based low-cut shoes which are in 70% white. The remaining 30% must not be in loud or flashy colours
 - 2.8.2 Contains only 1 shoe logo
 - 2.8.3 White shoe laces
 - 2.8.4 Plain white socks without logo visibly worn
- 2.9 For all official school events and functions, students are to report in full school uniform unless otherwise instructed.

E-Student Handbook
@JSS Website



Attendance & Late-coming

- All Jurong Secondary School students are expected to be in school every day, on time.
- In the event your child is not well, they are advised to consult a doctor and get a Medical Certificate (Official).
- Parents' letters are not official reasons for school absences.
- Students are encouraged to practice accountability and inform his/her FTs if unwell and will not be in school.

Attendance & Late-coming

TIMELINESS

- All Jurong Secondary School students need to be personally responsible to be in school punctually every day to actively participate in school activities that enhance learning and promote personal development. Being in school on time helps to ensure that every student is ready for the day's programme(s).

Challenges & Concerns in Sec One



Exposure to harmful content
Excessive screen use



Wilful absence from CCA



Rough play

Concerns regarding online activities of teens

THE STRAITS TIMES

MOE warns of dangerous social media challenges, parents advised to be on lookout for their children



The Ministry of Education issued an advisory to parents regarding the risks participating of online trends.
PHOTO: Screenshot/TikTok/Runner Kao

Singapore teenagers spend nearly 8.5 hours a day on screens: CNA-IPS survey

The survey found that teens spent the most time on screens daily – almost 3 hours – for education purposes, followed by entertainment for 2 hours.



Alexandra Anand



Louisa Tang

04 Feb 2025 03:20PM
(Updated: 06 Feb 2025 04:14PM)




cna

Top Stories Latest News Singapore Asia East Asia Commentary Insider TODAY Lifestyle Watch Listen All ▾

Commentary

Commentary: Many of us use screens for stress relief, but it's actually making us worse

Can't sit through a movie anymore? It's a bigger problem than you may think, says the National University of Singapore's Samer Elhajjar.

 Samer Elhajjar



THE STRAITS TIMES

Young and troubled: More t

No health without mental health

Young and troubled: More teens in Singapore getting hooked on digital devices and seeking help

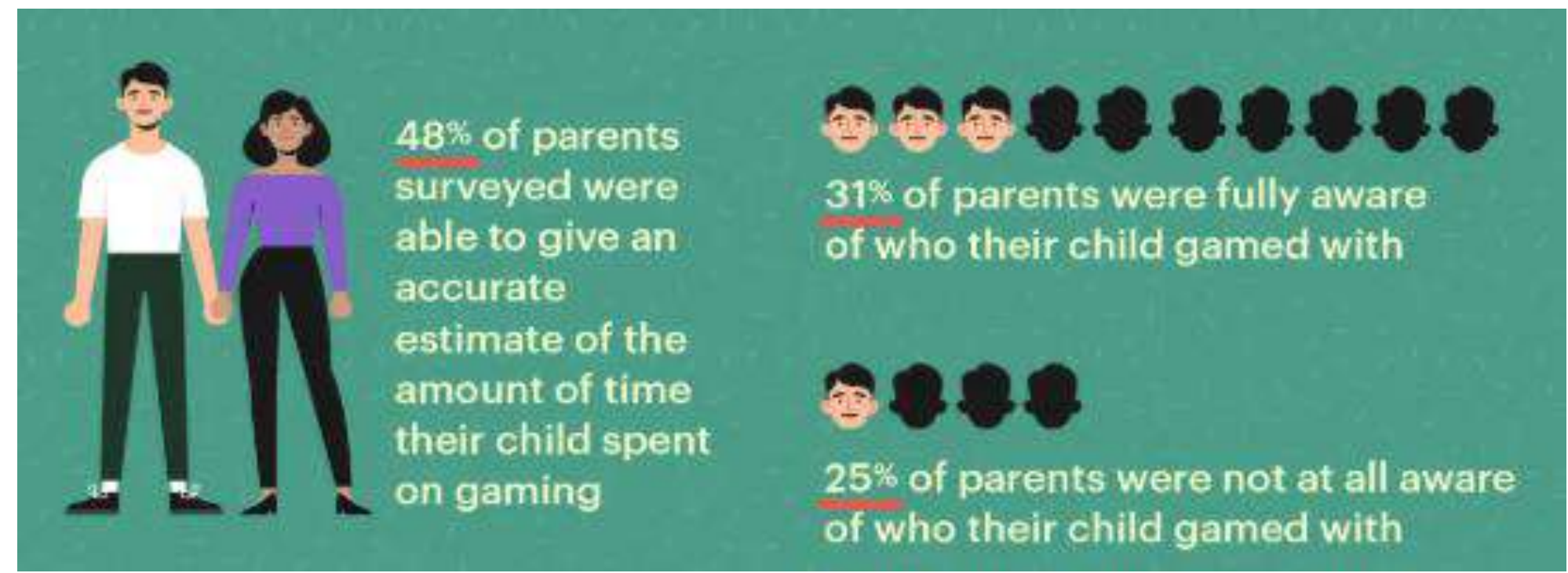
[Sign up now:](#) Get ST's newsletters delivered to your inbox



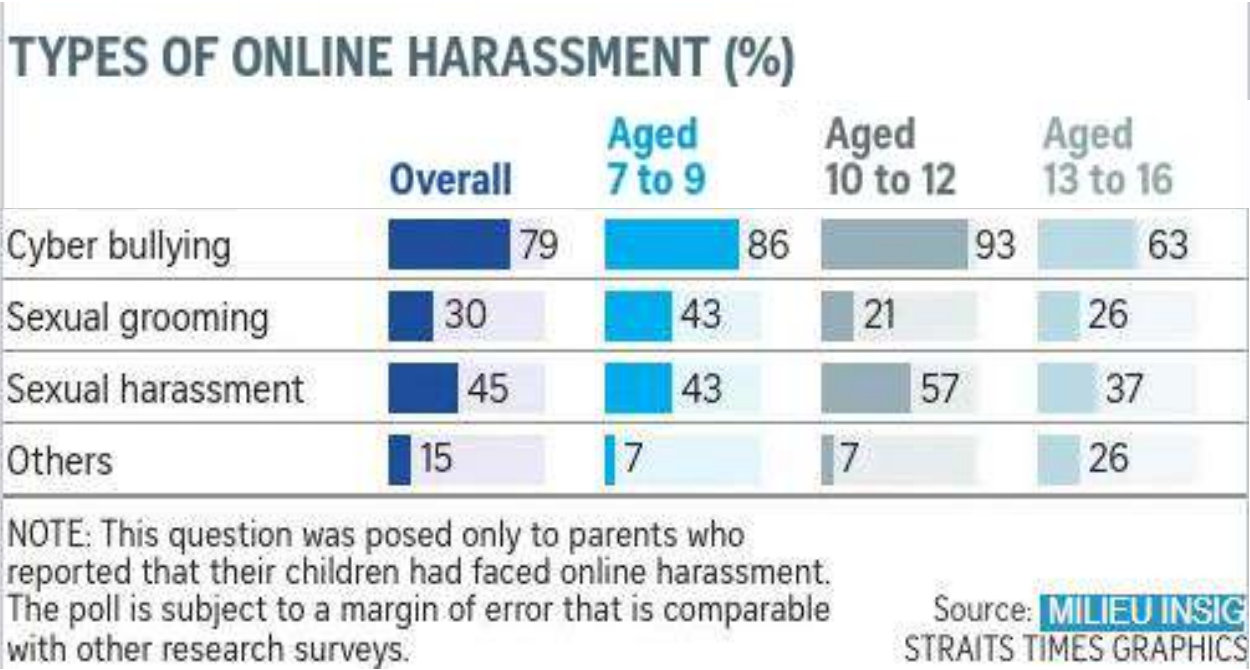
Concerns regarding online activities of teens

CURRENT REALITY

Types and frequency of harmful content our children are exposed to



Source: [MDDI Survey](#) (Feb 2024)



Source: Milieu Insights, [reported by the Straits Times](#) (Feb 2021)

Mobile Phone Policy

- Mobile devices include
 - Mobile phones, to their
 - Personal Learning Device
 - Smart watches
- The school will provide guidelines on their usage, and it is important for parent work with the school and speak the same language.

Supporting Your Child's Well-Being Through School-Home Partnership (SHP)

THE STRAITS TIMES

askST: What should I know before giving my child a mobile phone?

askST: What should I know before giving my child a mobile phone?

Sign up now: Get tips on how to help your child succeed



Consider restrictions like time limits and content filters before handing your child a smartphone.

PHOTO: ADOBE STOCK

Better Focus & Healthier Digital Habits

- Assess child's readiness for a smartphone
- Set clear expectations and restrictions
- Consider device contracts
- Address emotional gaps driving device dependence

Mobile Phone Policy

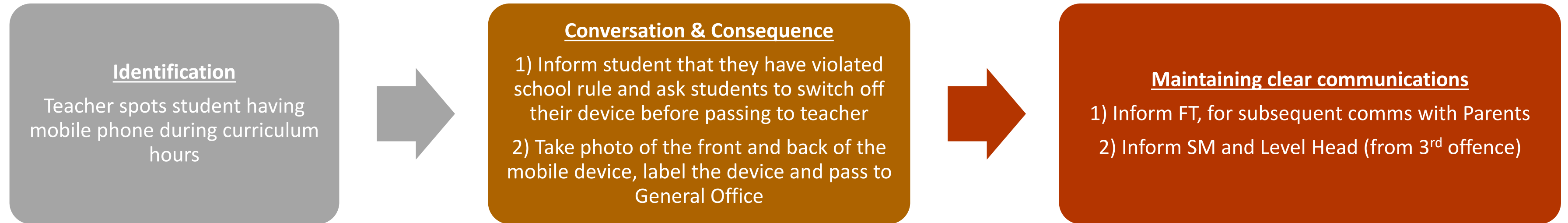
- Primary purpose of mobile phone is for communication.
- Mobile phones are used for increasing longer periods for reasons including
 - Games
 - Social Media
- While most of these uses are acceptable, there is a growing concern on excessive screen time and over reliance on mobile phones and irresponsible usage of devices.

Mobile Phone Policy

- To ensure that mobile phones are not a source of distraction, students are to lock their mobile phones in their personal lockers during curriculum time (from Mon – Thurs, Fri from 7.20am, Wed from 8.20am) till end of your child's curriculum time as stated in their timetable.
- During CCA / other school activities, teachers may instruct students to deposit their mobile phones in the mobile deposit box.



Mobile Phone Policy



First Offence

- Mobile Phone confiscated and passed to GO, **students to collect from GO after their last timetabled lesson**
- If confiscated by subject teacher, will need to inform FT immediately
- **On the same day**, FT to inform parents via PG, as parent will need to physically collect the child's mobile phone on the next offence

Second Offence

- Student to call (or text) parent/guardian that their **mobile phone will be kept by the school until physically collected by parents/ guardian from the FT.**
- Mobile Phone confiscated, and passed to GO
- If confiscated by subject teacher, will need to inform FT immediately
- **On the same day**, FT to inform parents via PG, and highlight that subsequent offence will be escalated to SM and child's conduct grade will be downgraded

Third Offence onwards

- Mobile Phone confiscated and passed to GO.
- If confiscated by subject teacher, will need to inform FT immediately. **FT to inform SM Comm & Level Head, and SM will engage both student & parents/ guardian.**
- Upon collection of mobile phone by parent/ guardian, student will need to **serve a probationary period of 2 weeks to deposit their mobile phone to the GO before flag raising ceremony**
- Conduct grade downgrade
- **Subsequent re-offence will result in further conduct grade downgrade, with case recorded in SOM (non-compliance/defiance)**

Conduct Grade

- Holistic assessment approach
 - Feedback from teachers during curriculum time & CCA
 - Attendance (School and CCA)
 - Late-coming
 - Offences
- Conduct Grade affects eligibility for:
 - Awards
 - Leadership opportunities
 - Opportunities to represent school

We want to..

**Partner every parent to develop every child
holistically**

- Role Model**
- Speak the same language as the school**
- Connect with your child (engage your child)**
- Share concerns / updates with us**

School-Home Partnership: Updates & Communication Approach

Day 0
Incident happened
Parents engaged

**3 working days for
straightforward cases**

**7 working days for cases
requiring some
investigation**

**21 working days for
complex cases
involving multiple
parties / different
schools**

Minor Offences

Form Teacher (FT)

Serious Offences

**FT / Class Mentor (CM)
Assistant Year Head (AYH) /
Year Head (YH)**

**FT / CM
AYH / YH
Student Management (SM) Comm**

Very Serious Offences

**FT / CM
AYH / YH**

**AYH / YH
SH/HOD – SM
School Leaders**

We want to teach every JSS student to..

T.H.I.N.K

T

IS IT TRUE?

Is this a fact or just an opinion or feeling?

H

IS IT HELPFUL?

Does it help you, them, or the situation?

I

IS IT INSPIRING?

Would it encourage, motivate, and make someone feel better?

N

IS IT NECESSARY?

Does it really have to be said, or you just want to or feel like saying it?

K

IS IT KIND?

Are you saying this with the intention to hurt someone's feelings?

be S.A.F.E



S.A.F.E. means

- **Stop** all interactions
- **Assess** the situation. Think of the possible choices / consequences.
- **Find** and save evidence only if safety not compromised.
- **Engage** and report. Share with a trusted adult and/or peer.